

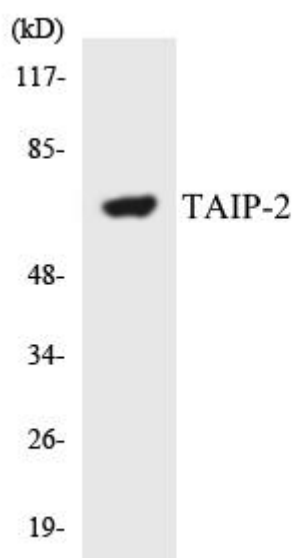


CSRNP3 Monoclonal Antibody

Catalog No	YP-mAb-00362
Isotype	IgG
Reactivity	Human;Mouse;Monkey
Applications	WB
Gene Name	CSRNP3
Protein Name	Cysteine/serine-rich nuclear protein 3
Immunogen	The antiserum was produced against synthesized peptide derived from human TAIP-2. AA range:171-220
Specificity	CSRNP3 Monoclonal Antibody detects endogenous levels of CSRNP3 protein.
Formulation	Liquid in PBS containing 50% glycerol, 0.5% BSA and 0.02% sodium azide.
Source	Monoclonal, Mouse,IgG
Purification	The antibody was affinity-purified from mouse antiserum by affinity-chromatography using epitope-specific immunogen.
Dilution	WB 1:500-1:2000
Concentration	1 mg/ml
Purity	≥90%
Storage Stability	-20°C/1 year
Synonyms	CSRNP3; FAM130A2; TAIP2; Cysteine/serine-rich nuclear protein 3; CSRNP-3; Protein FAM130A2; TGF-beta-induced apoptosis protein 2; TAIP-2
Observed Band	64kD
Cell Pathway	Nucleus .
Tissue Specificity	Embryo,Thymus,
Function	function: Binds to the consensus sequence 5'-AGAGTG-3' and has transcriptional activator activity. Plays a role in apoptosis.,sequence caution: Unusual initiator. The initiator methionine is coded by a non-canonical CTG leucine codon.,similarity: Belongs to the AXUD1 family.,
Background	function: Binds to the consensus sequence 5'-AGAGTG-3' and has transcriptional activator activity. Plays a role in apoptosis.,sequence caution: Unusual initiator. The initiator methionine is coded by a non-canonical CTG leucine codon.,similarity: Belongs to the AXUD1 family.,
matters needing attention	Avoid repeated freezing and thawing!

**Usage suggestions**

This product can be used in immunological reaction related experiments. For more information, please consult technical personnel.

Products Images

Western Blot analysis of various cells using CSRNP3 Monoclonal Antibody