



CIP29 Monoclonal Antibody

Catalog No	YP-mAb-00356
Isotype	IgG
Reactivity	Human;Mouse;Rat
Applications	WB
Gene Name	SARNP
Protein Name	SAP domain-containing ribonucleoprotein
Immunogen	The antiserum was produced against synthesized peptide derived from human HCC1. AA range:147-196
Specificity	CIP29 Monoclonal Antibody detects endogenous levels of CIP29 protein.
Formulation	Liquid in PBS containing 50% glycerol, 0.5% BSA and 0.02% sodium azide.
Source	Monoclonal, Mouse,IgG
Purification	The antibody was affinity-purified from mouse antiserum by affinity-chromatography using epitope-specific immunogen.
Dilution	WB 1:500-1:2000
Concentration	1 mg/ml
Purity	≥90%
Storage Stability	-20°C/1 year
Synonyms	SARNP; HCC1; HSPC316; SAP domain-containing ribonucleoprotein; Cytokine-induced protein of 29 kDa; Nuclear protein Hcc-1; Proliferation-associated cytokine-inducible protein CIP29
Observed Band	30kD
Cell Pathway	Nucleus. Nucleus speckle.
Tissue Specificity	Low expression in spleen, liver, pancreas, testis, thymus, heart, and kidney. Increased levels are seen in hepatocellular carcinoma and pancreatic adenocarcinoma.
Function	transcription, regulation of transcription, DNA-dependent, regulation of translation, posttranscriptional regulation of gene expression, regulation of cellular protein metabolic process, regulation of transcription, regulation of RNA metabolic process,
Background	This gene encodes a protein that is upregulated in response to various cytokines. The encoded protein may play a role in cell cycle progression. A translocation between this gene and the myeloid/lymphoid leukemia gene, resulting in expression of a chimeric protein, has been associated with acute myelomonocytic leukemia. Pseudogenes exist on chromosomes 7 and 8. Alternatively spliced transcript variants have been described. [provided by RefSeq, Feb 2009],



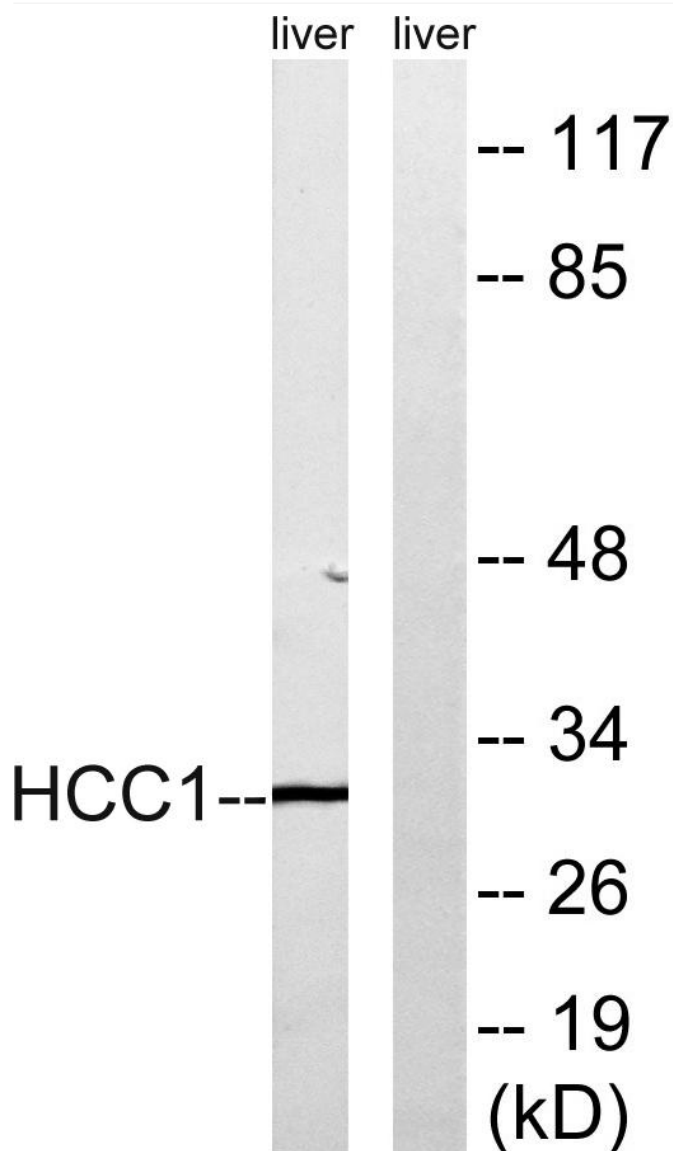
matters needing attention

Avoid repeated freezing and thawing!

Usage suggestions

This product can be used in immunological reaction related experiments. For more information, please consult technical personnel.

Products Images



Western Blot analysis of various cells using CIP29 Monoclonal Antibody