



CIDE-B Monoclonal Antibody

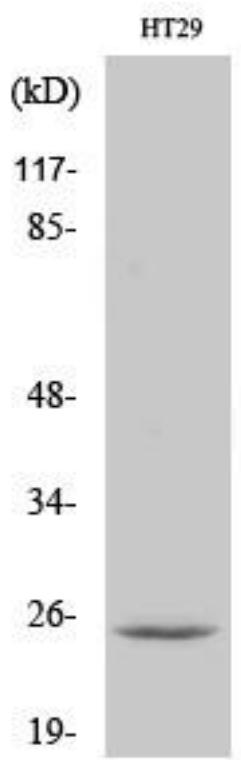
Catalog No	YP-mAb-00355
Isotype	IgG
Reactivity	Human;Mouse
Applications	WB
Gene Name	CIDEB
Protein Name	Cell death activator CIDE-B
Immunogen	The antiserum was produced against synthesized peptide derived from human CIDEB. AA range:91-140
Specificity	CIDE-B Monoclonal Antibody detects endogenous levels of CIDE-B protein.
Formulation	Liquid in PBS containing 50% glycerol, 0.5% BSA and 0.02% sodium azide.
Source	Monoclonal, Mouse,IgG
Purification	The antibody was affinity-purified from mouse antiserum by affinity-chromatography using epitope-specific immunogen.
Dilution	WB 1:500-1:2000
Concentration	1 mg/ml
Purity	≥90%
Storage Stability	-20°C/1 year
Synonyms	CIDEB; Cell death activator CIDE-B; Cell death-inducing DFFA-like effector B
Observed Band	24kD
Cell Pathway	intracellular,lipid particle,cytosol,perinuclear region of cytoplasm,
Tissue Specificity	Highly expressed in liver and small intestine and, at lower levels, in colon, kidney and spleen.
Function	function:Activates apoptosis.,similarity:Contains 1 CIDE-N domain.,subunit:Inhibited by DFFB. Interacts with DFFA and DFFB.,tissue specificity:Highly expressed in liver and small intestine and, at lower levels, in colon, kidney and spleen.,
Background	function:Activates apoptosis.,similarity:Contains 1 CIDE-N domain.,subunit:Inhibited by DFFB. Interacts with DFFA and DFFB.,tissue specificity:Highly expressed in liver and small intestine and, at lower levels, in colon, kidney and spleen.,
matters needing attention	Avoid repeated freezing and thawing!



Usage suggestions

This product can be used in immunological reaction related experiments. For more information, please consult technical personnel.

Products Images



Western Blot analysis of various cells using CIDE-B Monoclonal Antibody