

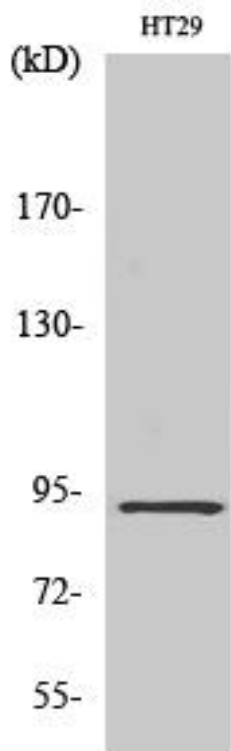


CAGE-1 Monoclonal Antibody

Catalog No	YP-mAb-00340
Isotype	IgG
Reactivity	Human;Rat;Mouse;
Applications	WB
Gene Name	CAGE1
Protein Name	Cancer-associated gene 1 protein
Immunogen	The antiserum was produced against synthesized peptide derived from human CAGE1. AA range:711-760
Specificity	CAGE-1 Monoclonal Antibody detects endogenous levels of CAGE-1 protein.
Formulation	Liquid in PBS containing 50% glycerol, 0.5% BSA and 0.02% sodium azide.
Source	Monoclonal, Mouse,IgG
Purification	The antibody was affinity-purified from mouse antiserum by affinity-chromatography using epitope-specific immunogen.
Dilution	WB 1:500-1:2000
Concentration	1 mg/ml
Purity	≥90%
Storage Stability	-20°C/1 year
Synonyms	CAGE1; CTAG3; Cancer-associated gene 1 protein; CAGE-1; Cancer/testis antigen 3; CT3
Observed Band	90kD
Cell Pathway	
Tissue Specificity	Testis-specific expression in normal tissues, but wide expression among cancer tissues and cell lines.
Function	tissue specificity:Testis-specific expression in normal tissues, but wide expression among cancer tissues and cell lines.,
Background	tissue specificity:Testis-specific expression in normal tissues, but wide expression among cancer tissues and cell lines.,
matters needing attention	Avoid repeated freezing and thawing!
Usage suggestions	This product can be used in immunological reaction related experiments. For more information, please consult technical personnel.



Products Images



Western Blot analysis of various cells using CAGE-1 Monoclonal Antibody