



BRCAA1 Monoclonal Antibody

Catalog No	YP-mAb-00336
Isotype	IgG
Reactivity	Human;Mouse;Rat
Applications	WB
Gene Name	ARID4B
Protein Name	AT-rich interactive domain-containing protein 4B
Immunogen	The antiserum was produced against synthesized peptide derived from human BRCAA1. AA range:761-810
Specificity	BRCAA1 Monoclonal Antibody detects endogenous levels of BRCAA1 protein.
Formulation	Liquid in PBS containing 50% glycerol, 0.5% BSA and 0.02% sodium azide.
Source	Monoclonal, Mouse,IgG
Purification	The antibody was affinity-purified from mouse antiserum by affinity-chromatography using epitope-specific immunogen.
Dilution	WB 1:500-1:2000
Concentration	1 mg/ml
Purity	≥90%
Storage Stability	-20°C/1 year
Synonyms	ARID4B; BRCAA1; RBBP1L1; RBP1L1; SAP180; AT-rich interactive domain-containing protein 4B; ARID domain-containing protein 4B; 180 kDa Sin3-associated polypeptide; Sin3-associated polypeptide p180; Breast cancer-associated antigen BRCAA1; Hi
Observed Band	148kD
Cell Pathway	Nucleus . Cytoplasm . Cytoplasmic in breast cancer cells. .
Tissue Specificity	Highly expressed in the testis and in breast, lung, colon, pancreatic and ovarian cancers. Expressed at low levels in the thymus, prostate and ovary.
Function	domain:The ARID domain is involved in stabilizing the mSin3A corepressor complex on DNA.,domain:The C-terminus mediates interaction with mSin3A corepressor complex.,domain:The N-terminus is involved in transcriptional repression by HDAC-independent mechanisms.,function:Acts as a transcriptional repressor. May function in the assembly and/or enzymatic activity of the Sin3A corepressor complex or in mediating interactions between the complex and other regulatory complexes.,similarity:Contains 1 ARID domain.,subcellular location:Cytoplasmic in breast cancer cells.,subunit:Component of a Sin3A corepressor complex consisting of SIN3A, SAP130, SUDS3/SAP45, SAP180, HDAC1 and HDAC2.,tissue specificity:Highly expressed in the testis and in breast, lung, colon, pancreatic and ovarian cancers. Expressed at low levels in the



thymus, prostate and ovary.,

Background

This gene encodes a protein with sequence similarity to retinoblastoma-binding protein-1. The encoded protein is a subunit of the histone deacetylase-dependant SIN3A transcriptional corepressor complex, which functions in diverse cellular processes including proliferation, differentiation, apoptosis, oncogenesis, and cell fate determination. The gene product is recognized by IgG antibody isolated from a breast cancer patient and appears to be a molecular marker associated with a broad range of human malignancies. Alternate transcriptional splice variants encoding different isoforms have been characterized. [provided by RefSeq, Jul 2008],

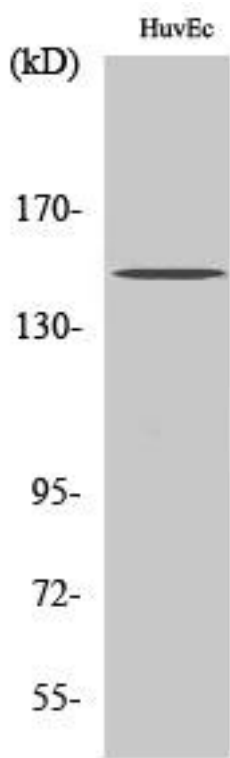
matters needing attention

Avoid repeated freezing and thawing!

Usage suggestions

This product can be used in immunological reaction related experiments. For more information, please consult technical personnel.

Products Images



Western Blot analysis of various cells using BRCA1 Monoclonal Antibody