



BRAF35 Monoclonal Antibody

Catalog No	YP-mAb-00332
Isotype	IgG
Reactivity	Human;Mouse;
Applications	WB
Gene Name	HMG20B
Protein Name	SWI/SNF-related matrix-associated actin-dependent regulator of chromatin subfamily E member 1-related
Immunogen	The antiserum was produced against synthesized peptide derived from human HMG20B. AA range:1-50
Specificity	BRAF35 Monoclonal Antibody detects endogenous levels of BRAF35 protein.
Formulation	Liquid in PBS containing 50% glycerol, 0.5% BSA and 0.02% sodium azide.
Source	Monoclonal, Mouse,IgG
Purification	The antibody was affinity-purified from mouse antiserum by affinity-chromatography using epitope-specific immunogen.
Dilution	WB 1:500-1:2000
Concentration	1 mg/ml
Purity	≥90%
Storage Stability	-20°C/1 year
Synonyms	HMG20B; BRAF35; HMGX2; HMGXB2; SMARCE1R; SWI/SNF-related matrix-associated actin-dependent regulator of chromatin subfamily E member 1-related; SMARCE1-related protein; BRCA2-associated factor 35; HMG box-containing protein 20B; HMG domain-
Observed Band	36kD
Cell Pathway	Nucleus. Chromosome. Localized to condensed chromosomes in mitosis in conjunction with BRCA2.
Tissue Specificity	Ubiquitously expressed in adult tissues.
Function	function:Required for correct progression through G2 phase of the cell cycle and entry into mitosis. Required for RCOR1/CoREST mediated repression of neuronal specific gene promoters.,sequence caution:Translation N-terminally extended.,similarity:Contains 1 HMG box DNA-binding domain.,subcellular location:Localized to condensed chromosomes in mitosis in conjunction with BRCA2.,subunit:Component of a BHC histone deacetylase complex that contains HDAC1, HDAC2, HMG20B/BRAF35, AOF2/LSD1, RCOR1/CoREST and PHF21A/BHC80. The BHC complex may also contain ZMYM2, ZNF217, ZMYM3, GSE1 and GTF2I. Interacts with the BRCA2 tumor suppressor protein.,tissue specificity:Ubiquitously expressed in adult tissues.,



Background

function: Required for correct progression through G2 phase of the cell cycle and entry into mitosis. Required for RCOR1/CoREST mediated repression of neuronal specific gene promoters.,sequence caution: Translation N-terminally extended.,similarity: Contains 1 HMG box DNA-binding domain.,subcellular location: Localized to condensed chromosomes in mitosis in conjunction with BRCA2.,subunit: Component of a BHC histone deacetylase complex that contains HDAC1, HDAC2, HMG20B/BRAF35, AOF2/LSD1, RCOR1/CoREST and PHF21A/BHC80. The BHC complex may also contain ZMYM2, ZNF217, ZMYM3, GSE1 and GTF2I. Interacts with the BRCA2 tumor suppressor protein.,tissue specificity: Ubiquitously expressed in adult tissues.,

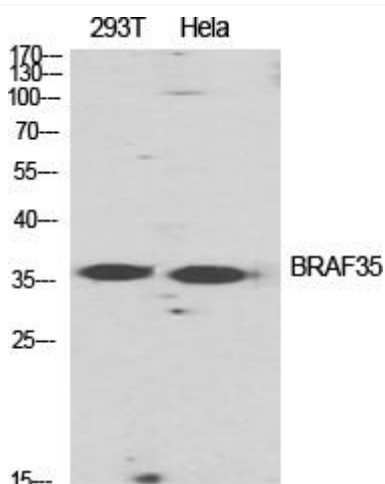
matters needing attention

Avoid repeated freezing and thawing!

Usage suggestions

This product can be used in immunological reaction related experiments. For more information, please consult technical personnel.

Products Images



Western Blot analysis of various cells using BRAF35 Monoclonal Antibody