

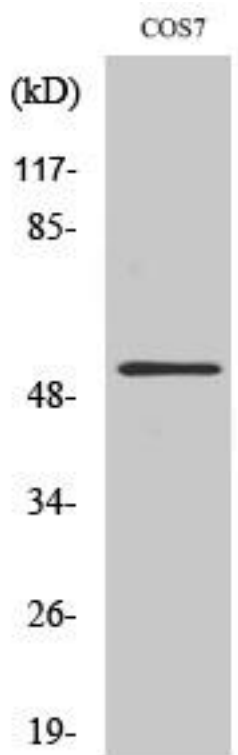


Aven Monoclonal Antibody

Catalog No	YP-mAb-00303
Isotype	IgG
Reactivity	Human;Monkey
Applications	WB
Gene Name	AVEN
Protein Name	Cell death regulator Aven
Immunogen	The antiserum was produced against synthesized peptide derived from human AVEN. AA range:301-350
Specificity	Aven Monoclonal Antibody detects endogenous levels of Aven protein.
Formulation	Liquid in PBS containing 50% glycerol, 0.5% BSA and 0.02% sodium azide.
Source	Monoclonal, Mouse,IgG
Purification	The antibody was affinity-purified from mouse antiserum by affinity-chromatography using epitope-specific immunogen.
Dilution	WB 1:500-1:2000
Concentration	1 mg/ml
Purity	≥90%
Storage Stability	-20°C/1 year
Synonyms	AVEN; Cell death regulator Aven
Observed Band	55kD
Cell Pathway	Endomembrane system; Peripheral membrane protein. Associated with intracellular membranes.
Tissue Specificity	Highly expressed in testis, ovary, thymus, prostate, spleen, small intestine, colon, heart, skeletal muscle, liver, kidney and pancreas.
Function	function:Protects against apoptosis mediated by Apaf-1.,subcellular location:Associated with intracellular membranes.,subunit:Binds Apaf-1, BCL-2 and BAD (Bcl-xl).,tissue specificity:Highly expressed in testis, ovary, thymus, prostate, spleen, small intestine, colon, heart, skeletal muscle, liver, kidney and pancreas.,
Background	function:Protects against apoptosis mediated by Apaf-1.,subcellular location:Associated with intracellular membranes.,subunit:Binds Apaf-1, BCL-2 and BAD (Bcl-xl).,tissue specificity:Highly expressed in testis, ovary, thymus, prostate, spleen, small intestine, colon, heart, skeletal muscle, liver, kidney and pancreas.,
matters needing attention	Avoid repeated freezing and thawing!

**Usage suggestions**

This product can be used in immunological reaction related experiments. For more information, please consult technical personnel.

Products Images

Western Blot analysis of various cells using Aven Monoclonal Antibody