

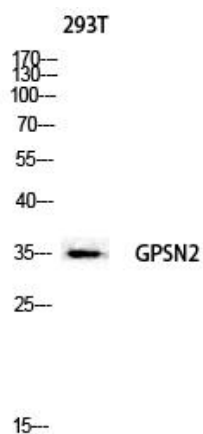


GPSN2 Polyclonal Antibody

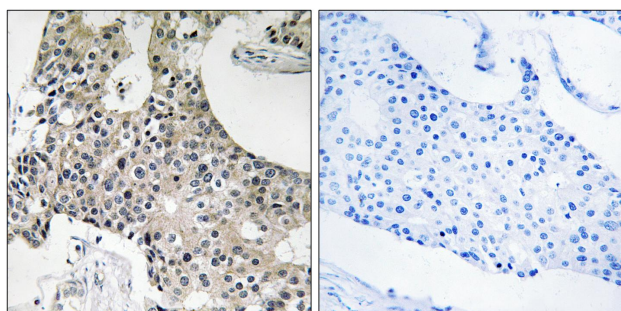
Catalog No	YP-Ab-02647
Isotype	IgG
Reactivity	Human;Mouse;Rat
Applications	WB;IHC;IF;ELISA
Gene Name	TECR
Protein Name	Trans-2,3-enoyl-CoA reductase
Immunogen	The antiserum was produced against synthesized peptide derived from human GPSN2. AA range:259-308
Specificity	GPSN2 Polyclonal Antibody detects endogenous levels of GPSN2 protein.
Formulation	Liquid in PBS containing 50% glycerol, 0.5% BSA and 0.02% sodium azide.
Source	Polyclonal, Rabbit,IgG
Purification	The antibody was affinity-purified from rabbit antiserum by affinity-chromatography using epitope-specific immunogen.
Dilution	IHC: 1/100 - 1/300. ELISA: 1/40000.. IF 1:50-200
Concentration	1 mg/ml
Purity	≥90%
Storage Stability	-20°C/1 year
Synonyms	TECR; GPSN2; SC2; Trans-2; 3-enoyl-CoA reductase; TER; Synaptic glycoprotein SC2
Calculated Molecular Weight	36kD
Cell Pathway	Endoplasmic reticulum membrane ; Multi-pass membrane protein .
Tissue Specificity	Expressed in most tissues tested. Highly expressed in skeletal muscle.
Function	steroid biosynthetic process, steroid metabolic process, lipid biosynthetic process, oxidation reduction,
Background	This gene encodes a multi-pass membrane protein that resides in the endoplasmic reticulum, and belongs to the steroid 5-alpha reductase family. The elongation of microsomal long and very long chain fatty acid consists of 4 sequential reactions. This protein catalyzes the final step, reducing trans-2,3-enoyl-CoA to saturated acyl-CoA. Alternatively spliced transcript variants have been found for this gene.[provided by RefSeq, Apr 2011],
matters needing attention	Avoid repeated freezing and thawing!

**Usage suggestions**

This product can be used in immunological reaction related experiments. For more information, please consult technical personnel.

Products Images

Western blot analysis of 293T lysis using GPSN2 antibody. Antibody was diluted at 1:2000



Immunohistochemistry analysis of paraffin-embedded human breast carcinoma tissue, using GPSN2 Antibody. The picture on the right is blocked with the synthesized peptide.