



CD27 (PT1818) Mouse mAb

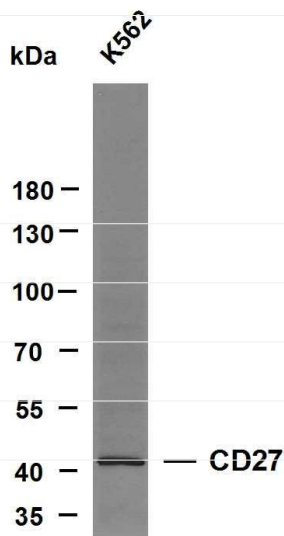
Catalog No	YP-mAb-18817
Isotype	IgG
Reactivity	Human,Mouse,Rat
Applications	WB
Gene Name	CD27 TNFRSF7
Protein Name	CD27 antigen (CD27L receptor) (T-cell activation antigen CD27) (T14) (Tumor necrosis factor receptor superfamily member 7) (CD antigen CD27)
Immunogen	Synthesized peptide derived from human CD27 AA range: 160-260
Specificity	This antibody detects endogenous levels of CD27 protein.
Formulation	PBS, 50% glycerol, 0.05% Proclin 300, 0.05%BSA
Source	Monoclonal,Mouse,IgG
Purification	Protein G
Dilution	WB 1:500-2000
Concentration	1 mg/ml
Purity	≥90%
Storage Stability	-20°C/1 year
Synonyms	
Observed Band	29kD
Calculated Molecular	40kD
Cell Pathway	Membranous
Tissue Specificity	Found in most T-lymphocytes.
Function	Receptor for CD70/CD27L. May play a role in survival of activated T-cells. May play a role in apoptosis through association with SIVA1.
Background	CD27 molecule(CD27) Homo sapiens The protein encoded by this gene is a member of the TNF-receptor superfamily. This receptor is required for generation and long-term maintenance of T cell immunity. It binds to ligand CD70, and plays a key role in regulating B-cell activation and immunoglobulin synthesis. This receptor transduces signals that lead to the activation of NF-kappaB and MAPK8/JNK. Adaptor proteins TRAF2 and TRAF5 have been shown to mediate the signaling process of this receptor. CD27-binding protein (SIVA), a proapoptotic protein, can bind to this receptor and is thought to play an important role in the apoptosis induced by this receptor. [provided by RefSeq, Jul 2008],

**matters needing attention**

Avoid repeated freezing and thawing!

Usage suggestions

This product can be used in immunological reaction related experiments. For more information, please consult technical personnel.

Products Images

Whole cell lysates were separated by 8% SDS-PAGE, and the membrane was blotted with anti-CD27 (PT1818) antibody. The HRP-conjugated anti-Mouse IgG antibody was used to detect the antibody. Lane 1: K562