

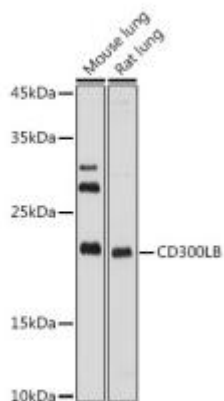


CD300LB Mouse mAb

Catalog No	YP-mAb-18816
Isotype	IgG
Reactivity	Human,Mouse;Rat
Applications	WB
Gene Name	
Protein Name	
Immunogen	Recombinant fusion protein containing a sequence corresponding to amino acids 1-201 of human CD300LB (NP_777552.3)
Specificity	
Formulation	PBS with 0.01% thimerosal,50% glycerol,pH7.3.
Source	Monoclonal, Mouse,IgG
Purification	Affinity purification
Dilution	WB 1:500 - 1:1000
Concentration	1 mg/ml
Purity	≥90%
Storage Stability	-20°C/1 year
Synonyms	CLM7; CLM-7; IREM3; TREM5; CD300b; IREM-3; TREM-5; CMRF35-A2; CD300LB
Observed Band	23kDa
Calculated Molecular Weight	23kDa
Cell Pathway	
Tissue Specificity	
Function	
Background	CD300LB is a nonclassical activating receptor of the immunoglobulin (Ig) superfamily expressed on myeloid cells (Martinez-Barriocanal and Sayos, 2006 [PubMed 16920917])
matters needing attention	Avoid repeated freezing and thawing!

**Usage suggestions**

This product can be used in immunological reaction related experiments. For more information, please consult technical personnel.

Products Images

Western blot analysis of various lysates using CD300LB Rabbit pAb (A20533) at 1:1000 dilution.

Secondary antibody: HRP-conjugated Goat anti-Rabbit IgG (H+L) (AS014) at 1:10000 dilution.

Lysates/proteins: 25μ g per lane.

Blocking buffer: 3% nonfat dry milk in TBST.

Detection: ECL Basic Kit (RM00020).

Exposure time: 10s.