

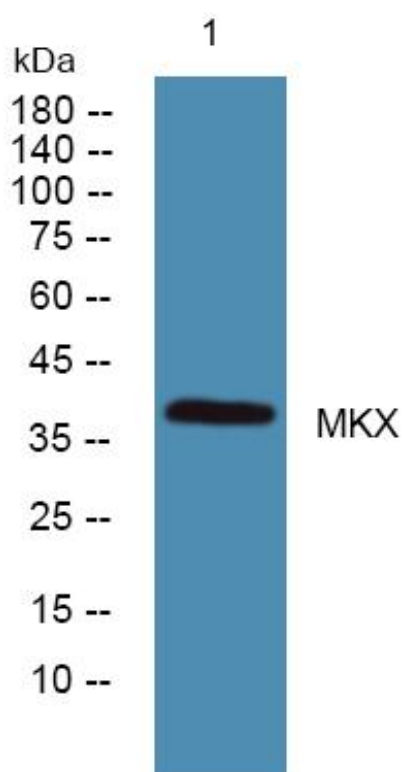


MKX Monoclonal Antibody

Catalog No	YP-mAb-06528
Isotype	IgG
Reactivity	Human;Mouse;Rat
Applications	WB
Gene Name	MKX C10orf48 IRXL1
Protein Name	Homeobox protein Mohawk
Immunogen	Synthesized peptide derived from human protein . at AA range: 250-330
Specificity	MKX Monoclonal Antibody detects endogenous levels of protein.
Formulation	Liquid in PBS containing 50% glycerol, and 0.02% sodium azide.
Source	Monoclonal, Mouse,IgG
Purification	The antibody was affinity-purified from mouse antiserum by affinity-chromatography using epitope-specific immunogen.
Dilution	WB 1:500-1:2000
Concentration	1 mg/ml
Purity	≥90%
Storage Stability	-20°C/1 year
Synonyms	
Observed Band	38kD
Cell Pathway	Nucleus .
Tissue Specificity	Brain,
Function	function:May act as a morphogenetic regulator of cell adhesion.,similarity:Belongs to the TALE/IRO homeobox family.,similarity:Contains 1 homeobox DNA-binding domain.,
Background	The protein encoded by this gene is an IRX family-related homeobox protein that may play a role in cell adhesion. Studies in mice suggest that this protein may be a regulator of tendon development. Two transcript variants encoding the same protein have been found for this gene.[provided by RefSeq, Jun 2011],
matters needing attention	Avoid repeated freezing and thawing!
Usage suggestions	This product can be used in immunological reaction related experiments. For more information, please consult technical personnel.



Products Images



Western Blot analysis of various cells using MKX Monoclonal Antibody