

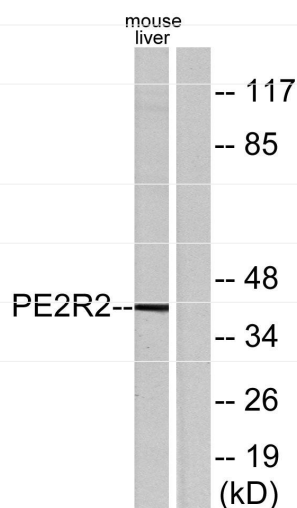


EP2 Rabbit pAb

Catalog No	YP-Ab-18814
Isotype	IgG
Reactivity	Human,Mouse,Rat
Applications	WB IF ELISA
Gene Name	PTGER2
Protein Name	Prostaglandin E2 receptor EP2 subtype
Immunogen	The antiserum was produced against synthesized peptide derived from human PE2R2. AA range:261-310
Specificity	EP2 Polyclonal Antibody detects endogenous levels of EP2 protein.
Formulation	Liquid in PBS containing 50% glycerol, 0.5% BSA and 0.02% sodium azide.
Source	Rabbit
Purification	The antibody was affinity-purified from rabbit antiserum by affinity-chromatography using epitope-specific immunogen.
Dilution	WB 1:500-1:2000; IF 1:200-1:1000; ELISA 1:10000; Not yet tested in other applications.
Concentration	1 mg/ml
Purity	≥90%
Storage Stability	-20°C/1 year
Synonyms	
Observed Band	40kD
Cell Pathway	Function:Receptor for prostaglandin E2 (PGE2). The activity of this receptor is mediated by G(s) proteins that stimulate adenylate cyclase. The subsequent raise in intracellular cAMP is responsible for the relaxing effect of this receptor on smooth muscle.,similarity:Belongs to the G-protein coupled receptor 1 family.,tissue specificity:Placenta and lung.,
Tissue Specificity	Cell membrane; Multi-pass membrane protein.
Function	This gene encodes a receptor for prostaglandin E2, a metabolite of arachidonic acid which has different biologic activities in a wide range of tissues. Mutations in this gene are associated with aspirin-induced susceptibility to asthma. [provided by RefSeq, Oct 2009],
Background	
matters needing attention	Avoid repeated freezing and thawing!

**Usage suggestions**

This product can be used in immunological reaction related experiments. For more information, please consult technical personnel.

Products Images

Placenta and lung.

Western blot analysis of lysates from mouse liver, using PE2R2 Antibody. The lane on the right is blocked with the synthesized peptide.