



GDF-8 Monoclonal Antibody

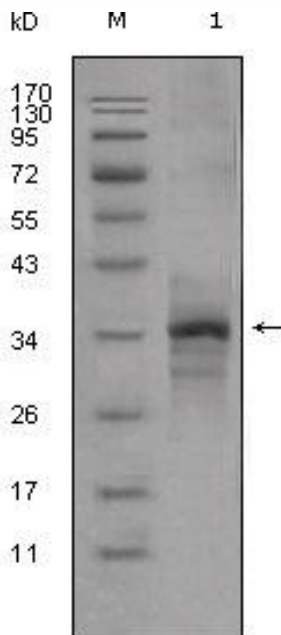
Catalog No	YP-Ab-15834
Isotype	IgG
Reactivity	Human
Applications	WB;ELISA
Gene Name	MSTN
Protein Name	Growth/differentiation factor 8
Immunogen	Purified recombinant fragment of GDF-8 expressed in E. Coli.
Specificity	GDF-8 Monoclonal Antibody detects endogenous levels of GDF-8 protein.
Formulation	Ascitic fluid containing 0.03% sodium azide,0.5% BSA, 50%glycerol.
Source	Monoclonal, Mouse
Purification	Affinity purification
Dilution	Western Blot: 1/500 - 1/2000. ELISA: 1/10000. Not yet tested in other applications.
Concentration	1 mg/ml
Purity	≥90%
Storage Stability	-20°C/1 year
Synonyms	MSTN; GDF8; Growth/differentiation factor 8; GDF-8; Myostatin
Calculated Molecular Weight	43kD
Cell Pathway	Secreted .
Tissue Specificity	Colon,Muscle,Pericardium,Skeletal muscle,
Function	function:Acts specifically as a negative regulator of skeletal muscle growth.,online information:Myostatin entry,similarity:Belongs to the TGF-beta family.,subunit:Homodimer; disulfide-linked (By similarity). Interacts with WFIKKN2, leading to inhibit its activity.,
Background	myostatin(MSTN) Homo sapiens This gene encodes a secreted ligand of the TGF-beta (transforming growth factor-beta) superfamily of proteins. Ligands of this family bind various TGF-beta receptors leading to recruitment and activation of SMAD family transcription factors that regulate gene expression. The encoded preproprotein is proteolytically processed to generate each subunit of the disulfide-linked homodimer. This protein negatively regulates skeletal muscle cell proliferation and differentiation. Mutations in this gene are associated with increased skeletal muscle mass in humans and other mammals. [provided by RefSeq, Jul 2016],

matters needing attention

Avoid repeated freezing and thawing!

Usage suggestions

This product can be used in immunological reaction related experiments. For more information, please consult technical personnel.

Products Images

Western Blot analysis using GDF-8 Monoclonal Antibody against truncated GDF-8-His recombinant protein (1).