

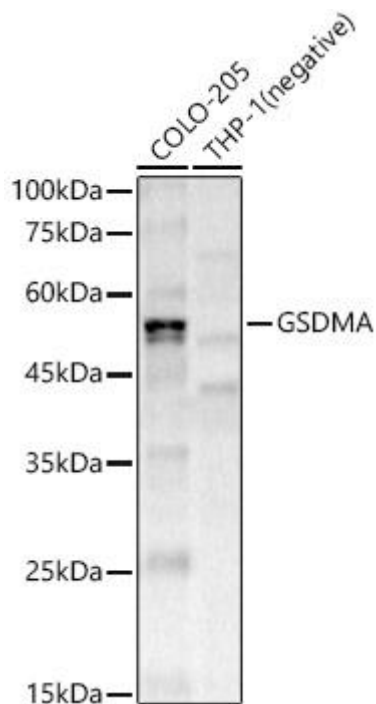


GSDMA Mouse mAb

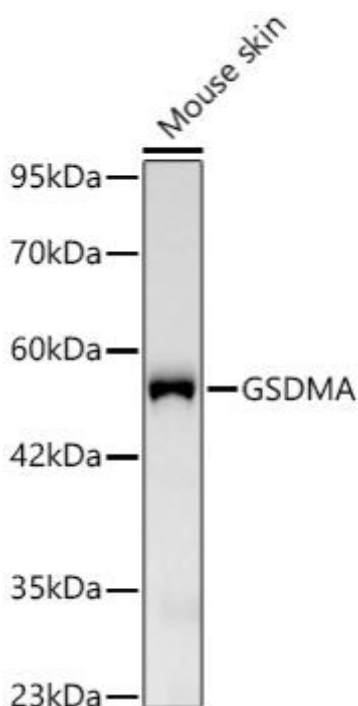
| | |
|-----------------------------|---|
| Catalog No | YP-mAb-18803 |
| Isotype | IgG |
| Reactivity | Human,Mouse,Rat |
| Applications | WB |
| Gene Name | |
| Protein Name | |
| Immunogen | Recombinant fusion protein containing a sequence corresponding to amino acids 61-181 human GSDMA |
| Specificity | |
| Formulation | |
| Source | |
| Purification | Affinity purification |
| Dilution | WB 1:500-2000 |
| Concentration | 1 mg/ml |
| Purity | ≥90% |
| Storage Stability | -20°C/1 year |
| Synonyms | |
| Observed Band | 49kDa |
| Calculated Molecular Weight | 49kDa |
| Cell Pathway | |
| Tissue Specificity | |
| Function | |
| Background | Predicted to enable phosphatidylinositol-4,5-bisphosphate binding activity; phosphatidylinositol-4-phosphate binding activity; and phosphatidylserine binding activity. Involved in apoptotic process. Located in perinuclear region of cytoplasm |
| matters needing attention | Avoid repeated freezing and thawing! |
| Usage suggestions | This product can be used in immunological reaction related experiments. For more information, please consult technical personnel. |



Products Images



Western blot analysis of various lysates, using GSDMA Mouse mAb (A22624) at 1:7000 dilution. Secondary antibody: HRP-conjugated Goat anti-Mouse IgG (H+L) (AS014) at 1:10000 dilution. Lysates/proteins: 25 μ g per lane. Blocking buffer: 3% nonfat dry milk in TBST. Detection: ECL Enhanced Kit (RM00021). Exposure time: 30s.



Western blot analysis of lysates from Mouse skin using GSDMA Mouse mAb (A22624) at 1:1000 dilution incubated overnight at 4°C. Secondary antibody: HRP-conjugated Goat anti-Mouse IgG (H+L) (AS014) at 1:10000 dilution. Lysates/proteins: 25 μ g per lane. Blocking buffer: 3% nonfat dry milk in TBST. Detection: ECL Basic Kit (RM00020). Exposure time: 90s.