



METTL13 Mouse mAb

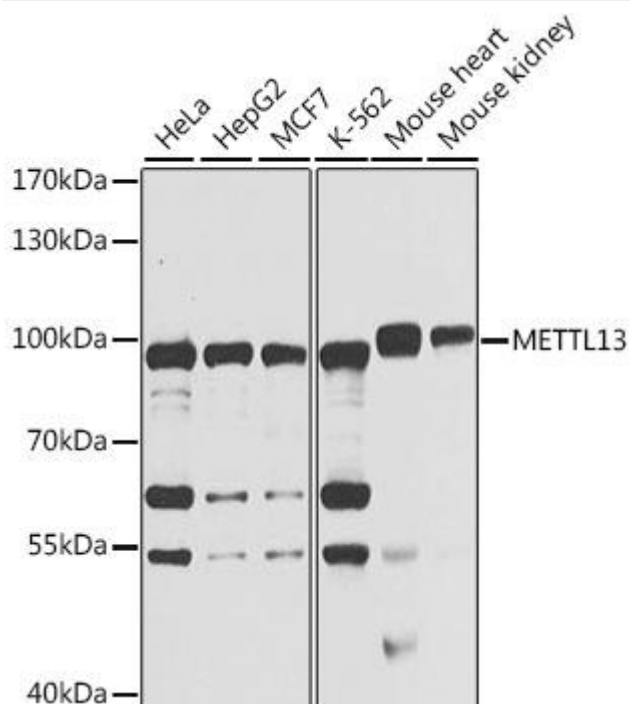
Catalog No	YP-mAb-18802
Isotype	IgG
Reactivity	Human,Mouse,Rat
Applications	WB
Gene Name	
Protein Name	
Immunogen	Recombinant fusion protein containing a sequence corresponding to amino acids 540-699 of human METTL13
Specificity	
Formulation	
Source	
Purification	Affinity purification
Dilution	WB 1:500-2000
Concentration	1 mg/ml
Purity	≥90%
Storage Stability	-20°C/1 year
Synonyms	feat; DFNM1; CGI-01; DFNB26; DFNB26M; KIAA0859; EEF1AKNMT; 5630401D24Rik; METTL13
Observed Band	90kDa
Calculated Molecular Weight	79kDa
Cell Pathway	
Tissue Specificity	
Function	Multifunctional actin-bundling protein. Plays a major role in regulating the organization, dimension, dynamics and signaling capacities of the actin filament-rich microvilli in the mechanosensory and chemosensory cells . Required for the assembly and stabilization of the stereociliary parallel actin bundles. Plays a crucial role in the formation and maintenance of inner ear hair cell stereocilia (By similarity). Involved in the elongation of actin in stereocilia . In extrastricular hair cells, required for targeting MYO3B to stereocilia tips, and for regulation of stereocilia diameter and staircase formation.
Background	Predicted to enable methyltransferase activity. Involved in negative regulation of cell cycle G1/S phase transition and negative regulation of transcription by RNA polymerase II. Predicted to be located in mitochondrion and nucleus.

**matters needing attention**

Avoid repeated freezing and thawing!

Usage suggestions

This product can be used in immunological reaction related experiments. For more information, please consult technical personnel.

Products Images

Western blot analysis of extracts of various cell lines, using METTL13 antibody (A7111) at 1:1000 dilution.

Secondary antibody: HRP Goat Anti-Mouse IgG (H+L) (AS014) at 1:10000 dilution.

Lysates/proteins: 25μg per lane.

Blocking buffer: 3% nonfat dry milk in TBST.

Detection: ECL Basic Kit (RM00020).

Exposure time: 10s