



# TAB1 Monoclonal Antibody

<b>Catalog No</b>	YP-Ab-03445
<b>Isotype</b>	IgG
<b>Reactivity</b>	Human;Mouse;Rat;Bovine;Dog;Pig
<b>Applications</b>	WB
<b>Gene Name</b>	TAB1
<b>Protein Name</b>	TGF-beta-activated kinase 1 and MAP3K7-binding protein 1
<b>Immunogen</b>	Purified recombinant human TAB1 (N-terminus) protein fragments expressed in E.coli.
<b>Specificity</b>	TAB1 Monoclonal Antibody detects endogenous levels of TAB1 protein.
<b>Formulation</b>	Purified mouse monoclonal in buffer containing 0.1M Tris-Glycine (pH 7.4, 150 mM NaCl) with 0.2% sodium azide, 50% glycerol.
<b>Source</b>	Monoclonal, Mouse
<b>Purification</b>	Affinity purification
<b>Dilution</b>	Western Blot: 1/1000 - 1/2000. Not yet tested in other applications.
<b>Concentration</b>	1 mg/ml
<b>Purity</b>	≥90%
<b>Storage Stability</b>	-20°C/1 year
<b>Synonyms</b>	TAB1; MAP3K7IP1; TGF-beta-activated kinase 1 and MAP3K7-binding protein 1; Mitogen-activated protein kinase kinase kinase 7-interacting protein 1; TGF-beta-activated kinase 1-binding protein 1; TAK1-binding protein 1
<b>Calculated Molecular Weight</b>	55kD
<b>Cell Pathway</b>	nucleoplasm,cytoplasm,cytosol,endosome membrane,protein complex,
<b>Tissue Specificity</b>	Ubiquitous.
<b>Function</b>	function:May be an important signaling intermediate between TGFB receptors and MAP3K7/TAK1. May play an important role in mammalian embryogenesis.,similarity:Contains 1 PP2C-like domain.,subunit:Interacts with MAP3K7, XIAP and BIRC7.,tissue specificity:Ubiquitous.,
<b>Background</b>	The protein encoded by this gene was identified as a regulator of the MAP kinase kinase kinase MAP3K7/TAK1, which is known to mediate various intracellular signaling pathways, such as those induced by TGF beta, interleukin 1, and WNT-1. This protein interacts and thus activates TAK1 kinase. It has been shown that the C-terminal portion of this protein is sufficient for binding and activation of TAK1, while a portion of the N-terminus acts as a dominant-negative inhibitor of TGF beta, suggesting that this protein may function as a mediator between TGF beta receptors and TAK1. This protein can also interact with and activate the



mitogen-activated protein kinase 14 (MAPK14/p38alpha), and thus represents an alternative activation pathway, in addition to the MAPKK pathways, which contributes to the biological responses of MAPK14 to various stimuli. Alternatively spliced tr

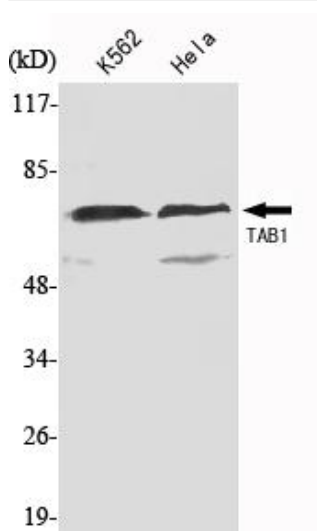
**matters needing attention**

Avoid repeated freezing and thawing!

**Usage suggestions**

This product can be used in immunological reaction related experiments. For more information, please consult technical personnel.

## Products Images



Western Blot analysis using TAB1 Monoclonal Antibody against K562, HeLa cell lysate.