

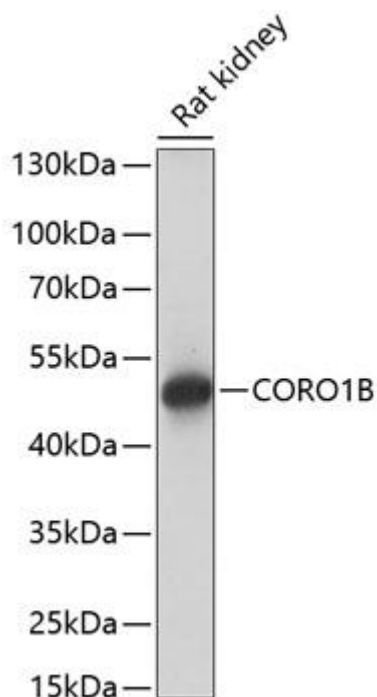


CORO1B Mouse mAb

| | |
|---------------------------|---|
| Catalog No | YP-mAb-18781 |
| Isotype | IgG |
| Reactivity | Human,Mouse,Rat |
| Applications | WB |
| Gene Name | |
| Protein Name | |
| Immunogen | Recombinant fusion protein containing a sequence corresponding to amino acids 380-489 of human CORO1B (NP_065174.1). |
| Specificity | |
| Formulation | |
| Source | |
| Purification | Affinity purification |
| Dilution | WB 1:500-2000 |
| Concentration | 1 mg/ml |
| Purity | ≥90% |
| Storage Stability | -20°C/1 year |
| Synonyms | CORONIN-2; CORO1B |
| Observed Band | 54kDa |
| Cell Pathway | |
| Tissue Specificity | |
| Function | |
| Background | Members of the coronin family, such as CORO1B, are WD repeat-containing actin-binding proteins that regulate cell motility (Cai et al., 2005 [PubMed 16027158]) |
| matters needing attention | Avoid repeated freezing and thawing! |
| Usage suggestions | This product can be used in immunological reaction related experiments. For more information, please consult technical personnel. |



Products Images



Western blot analysis of lysates from rat kidney, using CORO1B Mouse pAb (A14593) at 1:1000 dilution. Secondary antibody: HRP Goat Anti-Mouse IgG (H+L) (AS014) at 1:10000 dilution. Lysates/proteins: 25μg per lane. Blocking buffer: 3% nonfat dry milk in TBST. Detection: ECL Basic Kit (RM00020). Exposure time: 10s.