



Phospho-Ubiquitin-Ser65 Mouse mAb

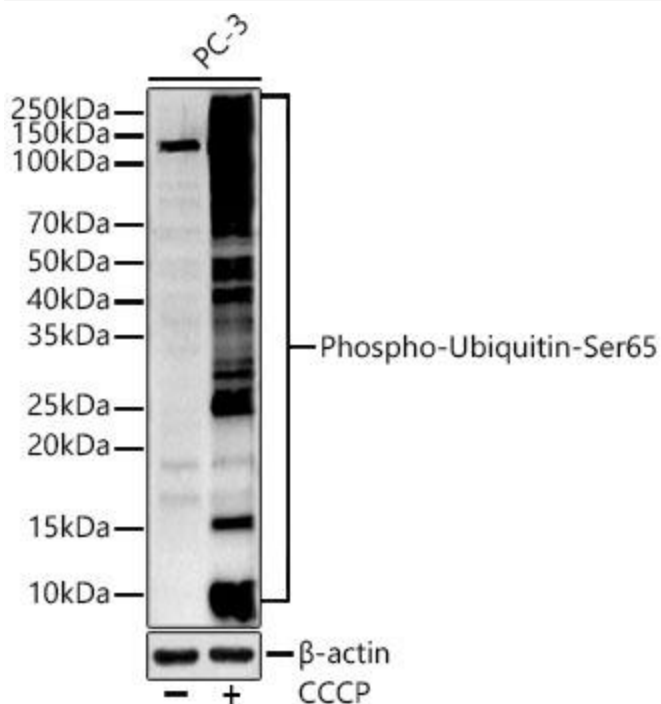
Catalog No	YP-mAb-18775
Isotype	IgG
Reactivity	Human,Mouse,Rat
Applications	WB
Gene Name	
Protein Name	
Immunogen	A synthetic phosphorylated peptide around S65 of human Ubiquitin
Specificity	
Formulation	
Source	
Purification	Affinity purification
Dilution	WB 1:500-2000
Concentration	1 mg/ml
Purity	≥90%
Storage Stability	-20°C/1 year
Synonyms	UBC; S27A; CEP80; UBA80; HEL112; UBCEP1; UBCEP80; L40; CEP52; RPL40; HUBCEP52; HEL S-50; HMG20; Phospho-Ubiquitin-Ser65
Observed Band	10-250kDa
Cell Pathway	
Tissue Specificity	
Function	
Background	Ubiquitin is a highly conserved nuclear and cytoplasmic protein that has a major role in targeting cellular proteins for degradation by the 26S proteasome. It is also involved in the maintenance of chromatin structure, the regulation of gene expression, and the stress response. Ubiquitin is synthesized as a precursor protein consisting of either polyubiquitin chains or a single ubiquitin moiety fused to an unrelated protein. This gene encodes a fusion protein consisting of ubiquitin at the N terminus and ribosomal protein L40 at the C terminus, a C-terminal extension protein (CEP). Multiple processed pseudogenes derived from this gene are present in the genome
matters needing attention	Avoid repeated freezing and thawing!



Usage suggestions

This product can be used in immunological reaction related experiments. For more information, please consult technical personnel.

Products Images



Western blot analysis of lysates from PC-3 cells, using Phospho-Ubiquitin-Ser65 Mouse pAb (AP1368) at 1:400 dilution. PC-3 cells were treated by Carbonyl cyanide 3-chlorophenylhydrazone (10 μ M) at 37°C for 6 hours after serum-starvation overnight. Secondary antibody: HRP-conjugated Goat anti-Mouse IgG (H+L) (AS014) at 1:10000 dilution. Lysates/proteins: 25 μ g per lane. Blocking buffer: 3% nonfat dry milk in TBST. Detection: ECL Enhanced Kit (RM00021). Exposure time: 60s.