

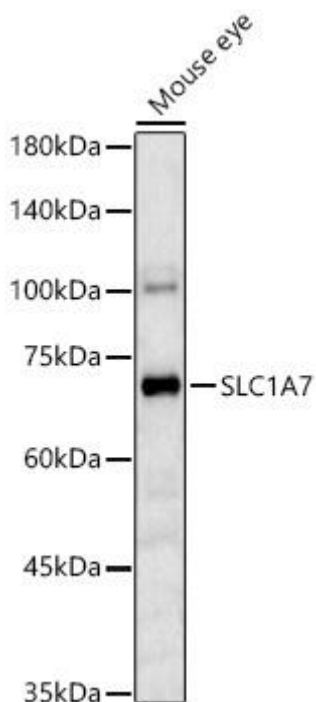


# SLC1A7 Mouse mAb

Catalog No	YP-mAb-18760
Isotype	IgG
Reactivity	Human,Mouse,Rat
Applications	WB
Gene Name	
Protein Name	
Immunogen	Recombinant fusion protein containing a sequence corresponding to amino acids 480-560 of human SLC1A7 (NP_006662.3).
Specificity	
Formulation	
Source	
Purification	Affinity purification
Dilution	WB 1:500-2000
Concentration	1 mg/ml
Purity	≥90%
Storage Stability	-20°C/1 year
Synonyms	AAAT; EAAT5; SLC1A7
Observed Band	72kDa
Cell Pathway	
Tissue Specificity	
Function	
Background	Predicted to enable anion transmembrane transporter activity. Involved in neurotransmitter reuptake. Predicted to be located in plasma membrane. Predicted to be active in glutamatergic synapse. Predicted to be integral component of postsynaptic membrane and integral component of presynaptic membrane.
matters needing attention	Avoid repeated freezing and thawing!
Usage suggestions	This product can be used in immunological reaction related experiments. For more information, please consult technical personnel.



## Products Images



Western blot analysis of lysates from Mouse eye, using SLC1A7 Mouse pAb (A10244) at 1:1000 dilution.

Secondary antibody: HRP-conjugated Goat anti-Mouse IgG (H+L) (AS014) at 1:10000 dilution.

Lysates/proteins: 25μ g per lane. Blocking buffer: 3% nonfat dry milk in TBST. Detection: ECL Basic Kit (RM00020). Exposure time: 180s.