

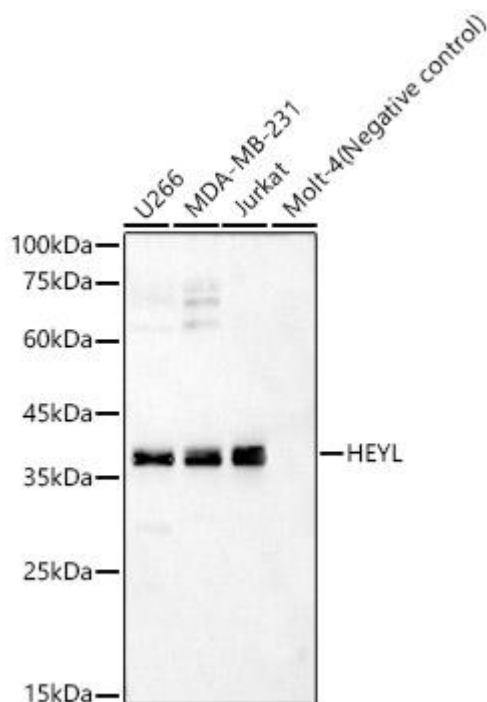


# HEYL Mouse mAb

|                           |  |
|---------------------------|--|
| Catalog No                | YP-mAb-18658   |
| Isotype                   | IgG  |
| Reactivity                | Human, Mouse, Rat  |
| Applications              | WB   |
| Gene Name                 |  |
| Protein Name              |  |
| Immunogen                 | Recombinant fusion protein containing a sequence corresponding to amino acids 1-100 of human HEYL (NP_055386.2)  |
| Specificity               |  |
| Formulation               |  |
| Source                    |  |
| Purification              | Affinity purification  |
| Dilution                  | WB 1:500-2000  |
| Concentration             | 1 mg/ml  |
| Purity                    | ≥90%   |
| Storage Stability         | -20°C/1 year   |
| Synonyms                  | HEY3; HRT3; HESR3; bHLHb33; HEYL   |
| Observed Band             | 37kDa  |
| Cell Pathway              |  |
| Tissue Specificity        |  |
| Function                  |  |
| Background                | This gene encodes a member of the hairy and enhancer of split-related (HESR) family of basic helix-loop-helix (bHLH)-type transcription factors. The sequence of the encoded protein contains a conserved bHLH and orange domain, but its YRPW motif has diverged from other HESR family members. It is thought to be an effector of Notch signaling and a regulator of cell fate decisions. Alternatively spliced transcript variants have been found, but their biological validity has not been determined. |
| matters needing attention | Avoid repeated freezing and thawing!   |
| Usage suggestions         | This product can be used in immunological reaction related experiments. For more information, please consult technical personnel.  |



## Products Images



Western blot analysis of various lysates, using HEYL Mouse pAb (A17683) at 1:2500 dilution. Secondary antibody: HRP-conjugated Goat anti-Mouse IgG (H+L) (AS014) at 1:10000 dilution. Lysates/proteins: 25μg per lane. Blocking buffer: 3% nonfat dry milk in TBST. Detection: ECL Basic Kit (RM00020). Exposure time: 30s.