

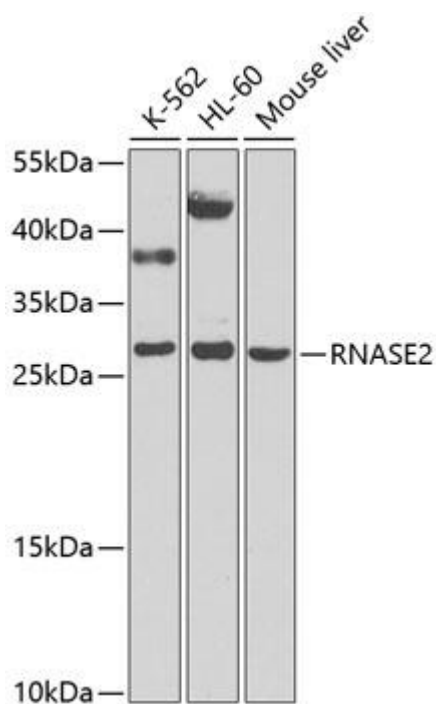


RNASE2 Mouse mAb

Catalog No	YP-mAb-18646
Isotype	IgG
Reactivity	Human, Mouse, Rat
Applications	WB
Gene Name	
Protein Name	
Immunogen	Recombinant fusion protein containing a sequence corresponding to amino acids 28-161 of human RNASE2 (NP_002925.1).
Specificity	
Formulation	
Source	
Purification	Affinity purification
Dilution	WB 1:500-2000
Concentration	1 mg/ml
Purity	≥90%
Storage Stability	-20°C/1 year
Synonyms	EDN; RAF3; RNS2; RNASE2
Observed Band	26kDa
Cell Pathway	
Tissue Specificity	
Function	
Background	The protein encoded by this gene is a non-secretory ribonuclease that belongs to the pancreatic ribonuclease family, a subset of the ribonuclease A superfamily. The protein antimicrobial activity against viruses.
matters needing attention	Avoid repeated freezing and thawing!
Usage suggestions	This product can be used in immunological reaction related experiments. For more information, please consult technical personnel.



Products Images



Western blot analysis of various lysates using RNASE2 Mouse pAb (A9949) at 1:1000 dilution. Secondary antibody: HRP Goat Anti-Mouse IgG (H+L) (AS014) at 1:10000 dilution. Lysates/proteins: 25μ g per lane. Blocking buffer: 3% nonfat dry milk in TBST. Detection: ECL Basic Kit (RM00020). Exposure time: 90s.