



Neutrophil Elastase (ELANE) Mouse mAb

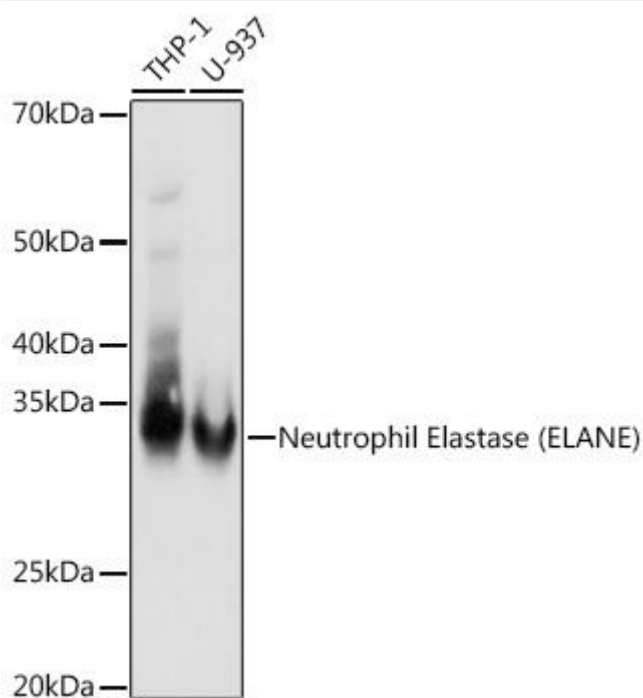
Catalog No	YP-mAb-18636
Isotype	IgG
Reactivity	Human, Mouse
Applications	WB
Gene Name	
Protein Name	
Immunogen	A synthetic peptide corresponding to a sequence within amino acids 167-267 of human Neutrophil Elastase (ELANE) (P08246).
Specificity	
Formulation	
Source	
Purification	Affinity purification
Dilution	WB 1:500-2000
Concentration	1 mg/ml
Purity	≥90%
Storage Stability	-20°C/1 year
Synonyms	GE; NE; HLE; HNE; ELA2; SCN1; PMN-E; Neutrophil Elastase (ELANE)
Observed Band	30kDa
Cell Pathway	
Tissue Specificity	
Function	
Background	Elastases form a subfamily of serine proteases that hydrolyze many proteins in addition to elastin. Humans have six elastase genes which encode structurally similar proteins. The encoded preproprotein is proteolytically processed to generate the active protease. Following activation, this protease hydrolyzes proteins within specialized neutrophil lysosomes, called azurophilic granules, as well as proteins of the extracellular matrix. The enzyme may play a role in degenerative and inflammatory diseases through proteolysis of collagen-IV and elastin. This protein also degrades the outer membrane protein A (OmpA) of <i>E. coli</i> as well as the virulence factors of such bacteria as <i>Shigella</i> , <i>Salmonella</i> and <i>Yersinia</i> . Mutations in this gene are associated with cyclic neutropenia and severe congenital neutropenia (SCN). This gene is present in a gene cluster on chromosome 19

**matters needing attention**

Avoid repeated freezing and thawing!

Usage suggestions

This product can be used in immunological reaction related experiments. For more information, please consult technical personnel.

Products Images

Western blot analysis of various lysates using Neutrophil Elastase (ELANE) Mouse mAb (A8953) at 1:1000 dilution. Secondary antibody: HRP-conjugated Goat anti-Mouse IgG (H+L) (AS014) at 1:10000 dilution. Lysates/proteins: 25μg per lane. Blocking buffer: 3% nonfat dry milk in TBST. Detection: ECL Basic Kit (RM00020). Exposure time: 3s