

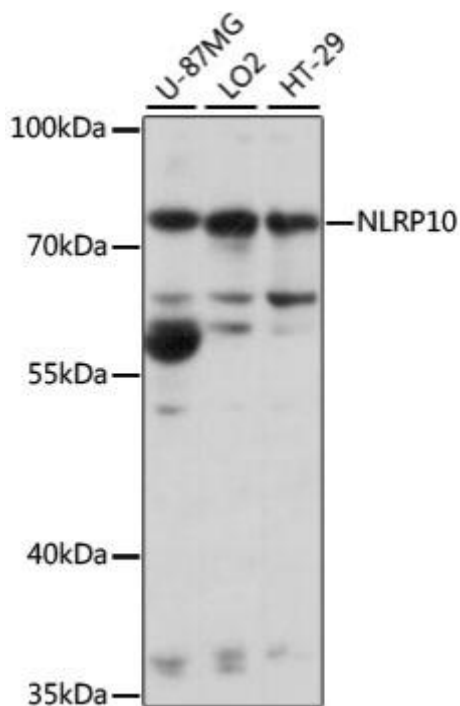


NLRP10 Mouse mAb

Catalog No	YP-mAb-18628
Isotype	IgG
Reactivity	Human, Mouse, Rat
Applications	WB
Gene Name	
Protein Name	
Immunogen	Recombinant fusion protein containing a sequence corresponding to amino acids 1-300 of human NLRP10 (NP_789791.1).
Specificity	
Formulation	
Source	
Purification	Affinity purification
Dilution	WB 1:500-2000
Concentration	1 mg/ml
Purity	≥90%
Storage Stability	-20°C/1 year
Synonyms	NOD8; PAN5; PYNOD; NALP10; CLR11.1; NLRP10
Observed Band	75kDa
Cell Pathway	
Tissue Specificity	
Function	
Background	Members of the NALP protein family typically contain a NACHT domain, a NACHT-associated domain (NAD), a C-terminal leucine-rich repeat (LRR) region, and an N-terminal pyrin domain (PYD). The protein encoded by this gene belongs to the NALP protein family despite lacking the LRR region. This protein likely plays a regulatory role in the innate immune system. The protein belongs to the signal-induced multiprotein complex, the inflammasome, that activates the pro-inflammatory caspases, caspase-1 and caspase-5. Other experiments indicate that this gene acts as a multifunctional negative regulator of inflammation and apoptosis
matters needing attention	Avoid repeated freezing and thawing!

**Usage suggestions**

This product can be used in immunological reaction related experiments. For more information, please consult technical personnel.

Products Images

Western blot analysis of various lysates using NLRP10 Mouse pAb (A15976) at 1:1000 dilution. Secondary antibody: HRP Goat Anti-Mouse IgG (H+L) (AS014) at 1:10000 dilution. Lysates/proteins: 25μ g per lane. Blocking buffer: 3% nonfat dry milk in TBST. Detection: ECL Basic Kit (RM00020). Exposure time: 10s.