



# Cytokeratin 1 (KRT1) Mouse mAb

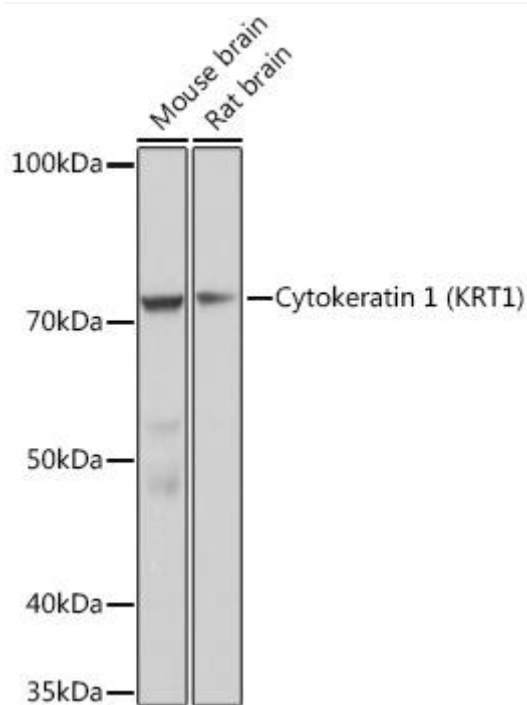
Catalog No	YP-mAb-18626
Isotype	IgG
Reactivity	Human, Mouse, Rat
Applications	WB
Gene Name	
Protein Name	
Immunogen	A synthetic peptide corresponding to a sequence within amino acids 545-644 of human Cytokeratin 1 (KRT1) (P04264)
Specificity	
Formulation	
Source	
Purification	Affinity purification
Dilution	WB 1:500-2000
Concentration	1 mg/ml
Purity	≥90%
Storage Stability	-20°C/1 year
Synonyms	K1; CK1; EHK; AEI2; EHK1; EPPK; KRT1A; NEPPK; Cytokeratin 1 (KRT1)
Observed Band	70kDa
Cell Pathway	
Tissue Specificity	
Function	
Background	The protein encoded by this gene is a member of the keratin gene family. The type II cytokeratins consist of basic or neutral proteins which are arranged in pairs of heterotypic keratin chains coexpressed during differentiation of simple and stratified epithelial tissues. This type II cytokeratin is specifically expressed in the spinous and granular layers of the epidermis with family member KRT10 and mutations in these genes have been associated with bullous congenital ichthyosiform erythroderma. The type II cytokeratins are clustered in a region of chromosome 12q12-q13.
matters needing attention	Avoid repeated freezing and thawing!



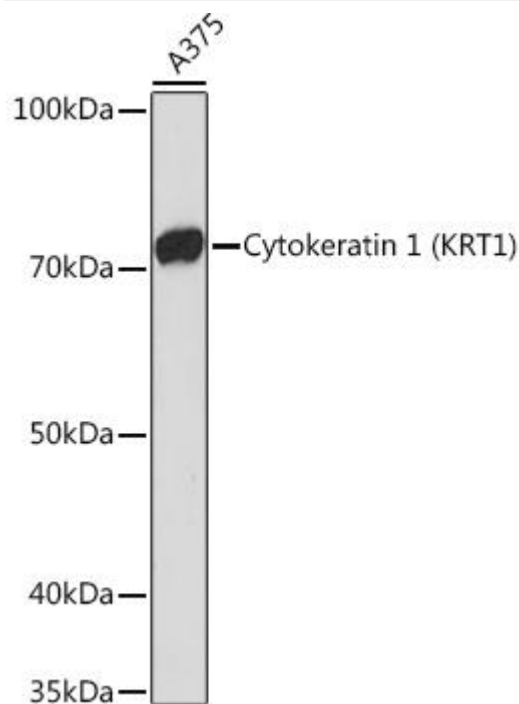
## Usage suggestions

This product can be used in immunological reaction related experiments. For more information, please consult technical personnel.

## Products Images



Western blot analysis of various lysates using Cytokeratin 1 (KRT1) (KRT1) Mouse mAb (A9776) at 1:1000 dilution. Secondary antibody: HRP-conjugated Goat anti-Mouse IgG (H+L) (AS014) at 1:10000 dilution. Lysates/proteins: 25μ g per lane. Blocking buffer: 3% nonfat dry milk in TBST. Detection: ECL Basic Kit (RM00020). Exposure time: 1s.



Western blot analysis of lysates from A375 cells, using Cytokeratin 1 (KRT1) (KRT1) Mouse mAb (A9776) at 1:1000 dilution. Secondary antibody: HRP-conjugated Goat anti-Mouse IgG (H+L) (AS014) at 1:10000 dilution. Lysates/proteins: 25μ g per lane. Blocking buffer: 3% nonfat dry milk in TBST. Detection: ECL Basic Kit (RM00020). Exposure time: 3min.