

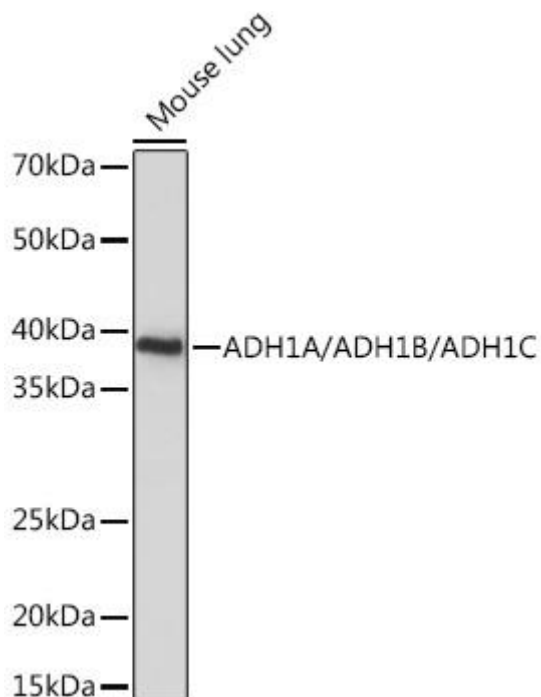


# ADH1A/ADH1B/ADH1C Mouse mAb

Catalog No	YP-mAb-18613
Isotype	IgG
Reactivity	Human;Rat;Mouse;
Applications	WB
Gene Name	
Protein Name	
Immunogen	A synthetic peptide corresponding to a sequence within amino acids 270-370 of human ADH1A/ADH1B/ADH1C (NP_000659.2).
Specificity	
Formulation	
Source	
Purification	Affinity purification
Dilution	WB 1:500-2000
Concentration	1 mg/ml
Purity	≥90%
Storage Stability	-20°C/1 year
Synonyms	ADH1A/ADH1B/ADH1C
Observed Band	40kDa
Cell Pathway	
Tissue Specificity	
Function	
Background	Alcohol dehydrogenase,consisting of several homo- and heterodimers of alpha, beta, and gamma subunits, exhibits high activity for ethanol oxidation and plays a major role in ethanol catabolism.Members of this enzyme family metabolize a wide variety of substrates, including ethanol, retinol, other aliphatic alcohols, hydroxysteroids, and lipid peroxidation products. Three genes encoding alpha, beta and gamma subunits are tandemly organized in a genomic segment as a gene cluster.
matters needing attention	Avoid repeated freezing and thawing!
Usage suggestions	This product can be used in immunological reaction related experiments. For more information, please consult technical personnel.



## Products Images



Western blot analysis of lysates from Mouse lung, using ADH1A/ADH1B/ADH1C Rabbit pAb (A18581) at 1:1000 dilution. Secondary antibody: HRP Goat Anti-Mouse IgG (H+L) (AS014) at 1:10000 dilution. Lysates/proteins: 25μ g per lane. Blocking buffer: 3% nonfat dry milk in TBST. Detection: ECL Basic Kit (RM00020). Exposure time: 10s.