



# HO-1 Mouse mAb(Mix-mA)

<b>Catalog No</b>	YP-mAb-04799
<b>Isotype</b>	IgG
<b>Reactivity</b>	Human; Mouse;Rat
<b>Applications</b>	IHC;WB;IF
<b>Gene Name</b>	HMOX1 HO HO1
<b>Protein Name</b>	HO-1
<b>Immunogen</b>	Synthesized peptide derived from human HO-1
<b>Specificity</b>	This antibody detects endogenous levels of HO-1 at Human, Mouse,Rat
<b>Formulation</b>	Liquid in PBS containing 50% glycerol, 0.5% BSA and 0.39% sodium azide.
<b>Source</b>	Monoclonal, Mouse
<b>Purification</b>	The antibody was affinity-purified from mouse ascites by affinity-chromatography using specific immunogen.
<b>Dilution</b>	IF 1:50-200 IHC-p1:50-200 ,WB 1:1000-2000
<b>Concentration</b>	1 mg/ml
<b>Purity</b>	≥90%
<b>Storage Stability</b>	-20°C/1 year
<b>Synonyms</b>	Heme oxygenase 1 (HO-1) (EC 1.14.99.3)
<b>Observed Band</b>	28kD
<b>Cell Pathway</b>	Endoplasmic reticulum membrane ; Single-pass type IV membrane protein ; Cytoplasmic side .
<b>Tissue Specificity</b>	Expressed at higher levels in renal cancer tissue than in normal tissue (at protein level).
<b>Function</b>	catalytic activity:Heme + 3 AH(2) + 3 O(2) = biliverdin + Fe(2+) + CO + 3 A + 3 H(2)O.,function:Heme oxygenase cleaves the heme ring at the alpha methene bridge to form biliverdin. Biliverdin is subsequently converted to bilirubin by biliverdin reductase. Under physiological conditions, the activity of heme oxygenase is highest in the spleen, where senescent erythrocytes are sequestrated and destroyed.,induction:Heme oxygenase 1 activity is highly inducible by its substrate heme and by various non-heme substances such as heavy metals, bromobenzene, endotoxin, oxidizing agents and UVA.,similarity:Belongs to the heme oxygenase family.,
<b>Background</b>	heme oxygenase 1(HMOX1) Homo sapiens Heme oxygenase, an essential enzyme in heme catabolism, cleaves heme to form biliverdin, which is subsequently converted to bilirubin by biliverdin reductase, and carbon monoxide, a putative neurotransmitter. Heme oxygenase activity is induced by its substrate heme and by various nonheme substances. Heme oxygenase occurs as 2 isozymes, an inducible heme oxygenase-1 and a constitutive heme oxygenase-2.



HMOX1 and HMOX2 belong to the heme oxygenase family. [provided by RefSeq, Jul 2008],

**matters needing attention**

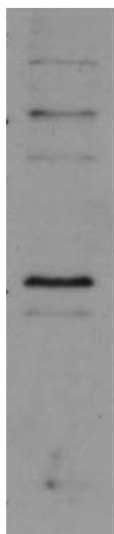
Avoid repeated freezing and thawing!

**Usage suggestions**

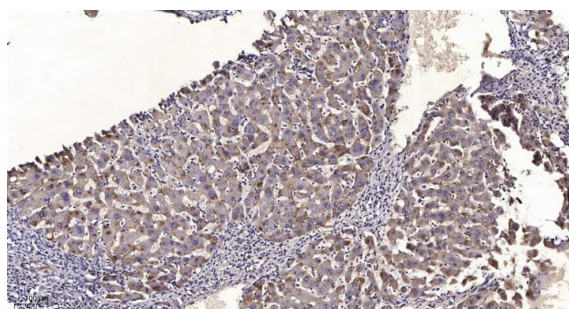
This product can be used in immunological reaction related experiments. For more information, please consult technical personnel.

**Products Images**

94KD ———  
66KD ———  
45KD ———  
35KD ———  
26KD ———  
  
14.4KD ———  
14.4KD ———



Western blot analysis of 3T3 Cell Lysate using HO-1 Mouse Monoclonal mAb diluted at 1:2,000.



Immunohistochemical analysis of paraffin-embedded human liver cancer. 1, Antibody was diluted at 1:200(4 ° overnight). 2, Tris-EDTA, pH9.0 was used for antigen retrieval. 3, Secondary antibody was diluted at 1:200(room temperature, 45min).