

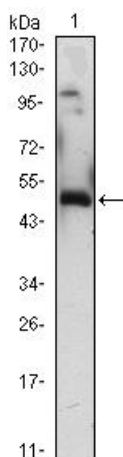


Egr-1 Monoclonal Antibody

Catalog No	YP-mAb-00966
Isotype	IgG
Reactivity	Human;Mouse;Rat
Applications	WB
Gene Name	EGR1
Protein Name	Early growth response protein 1
Immunogen	Purified recombinant fragment of human Egr-1 (aa282-433) expressed in E. Coli.
Specificity	Egr-1 Monoclonal Antibody detects endogenous levels of Egr-1 protein.
Formulation	Ascitic fluid containing 0.03% sodium azide,0.5% BSA, 50%glycerol.
Source	Monoclonal, Mouse
Purification	The antibody was affinity-purified from mouse antiserum by affinity-chromatography using epitope-specific immunogen.
Dilution	WB 1:500-1:2000
Concentration	1 mg/ml
Purity	≥90%
Storage Stability	-20°C/1 year
Synonyms	EGR1; KROX24; ZNF225; Early growth response protein 1; EGR-1; AT225; Nerve growth factor-induced protein A; NGFI-A; Transcription factor ETR103; Transcription factor Zif268; Zinc finger protein 225; Zinc finger protein Krox-24
Observed Band	78kD
Cell Pathway	Nucleus . Cytoplasm .
Tissue Specificity	Detected in neutrophils (at protein level).
Function	function:Transcriptional regulator. Recognizes and binds to the DNA sequence 5'-CGCCCCCGC-3'(EGR-site). Activates the transcription of target genes whose products are required for mitogenesis and differentiation.,induction:By growth factors.,similarity:Belongs to the EGR C2H2-type zinc-finger protein family.,similarity:Contains 3 C2H2-type zinc fingers.,
Background	The protein encoded by this gene belongs to the EGR family of C2H2-type zinc-finger proteins. It is a nuclear protein and functions as a transcriptional regulator. The products of target genes it activates are required for differentiation and mitogenesis. Studies suggest this is a cancer suppressor gene. [provided by RefSeq, Dec 2014],
matters needing attention	Avoid repeated freezing and thawing!

**Usage suggestions**

This product can be used in immunological reaction related experiments. For more information, please consult technical personnel.

Products Images

Western Blot analysis of various cells using Egr-1 Monoclonal Antibody