

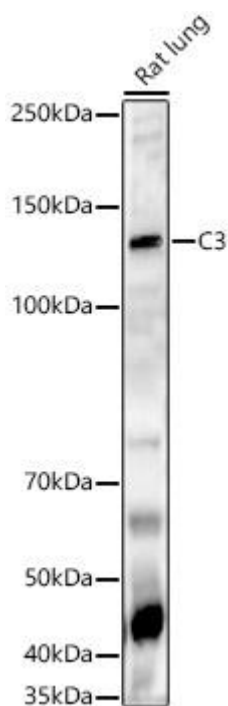


# C3 Mouse mAb

Catalog No	YP-mAb-18541
Isotype	IgG
Reactivity	Human,Mouse,Rat
Applications	WB
Gene Name	
Protein Name	
Immunogen	A synthetic peptide corresponding to a sequence within amino acids 1159-1286 of mouse C3 (NP_033908.2)
Specificity	
Formulation	
Source	
Purification	Affinity purification
Dilution	WB 1:500 - 1:2000
Concentration	1 mg/ml
Purity	≥90%
Storage Stability	-20°C/1 year
Synonyms	ASP; Plp; HSE-MSF; C3
Observed Band	115kDa
Cell Pathway	
Tissue Specificity	
Function	
Background	This gene encodes complement protein C3 which plays a central role in the classical, alternative and lectin activation pathways of the complement system. The encoded preproprotein undergoes a multi-step processing to generate various functional peptides. Mice deficient in the encoded protein fail to clear bacteria from the blood stream upon infection, display diminished airway hyperresponsiveness and lung eosinophilia upon allergen-induced pulmonary allergy, and develop severe lung injury after deposition of IgG immune complexes. Deficiency of the homolog of the encoded protein in humans was found to be associated with increased susceptibility to infections, age-related macular degeneration, and atypical hemolytic uremic syndrome.
matters needing attention	Avoid repeated freezing and thawing!

**Usage suggestions**

This product can be used in immunological reaction related experiments. For more information, please consult technical personnel.

**Products Images**

Western blot analysis of lysates from Rat lung, using C3 Mouse pAb (A16781) at 1:1000 dilution. Secondary antibody: HRP-conjugated Goat anti-Mouse IgG (H+L) (AS014) at 1:10000 dilution. Lysates/proteins: 25μg per lane. Blocking buffer: 3% nonfat dry milk in TBST. Detection: ECL Basic Kit (RM00020). Exposure time: 180s.