

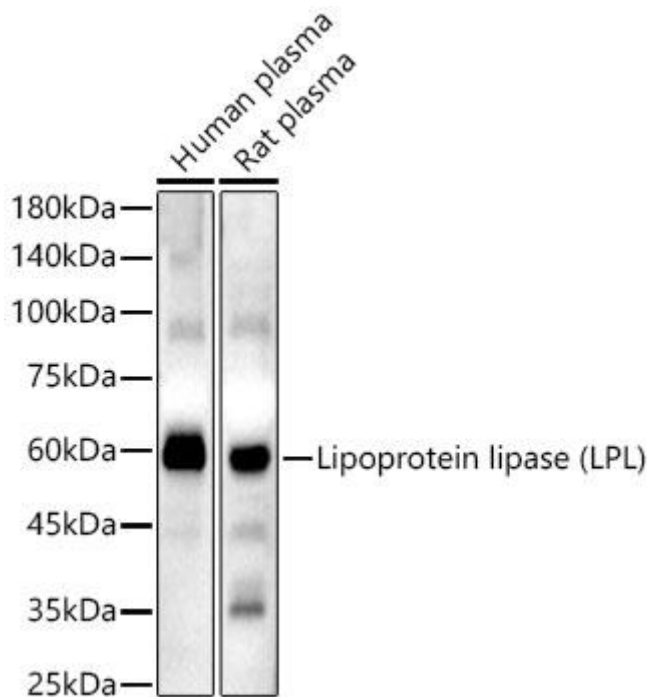


# Lipoprotein lipase (LPL) Mouse mAb

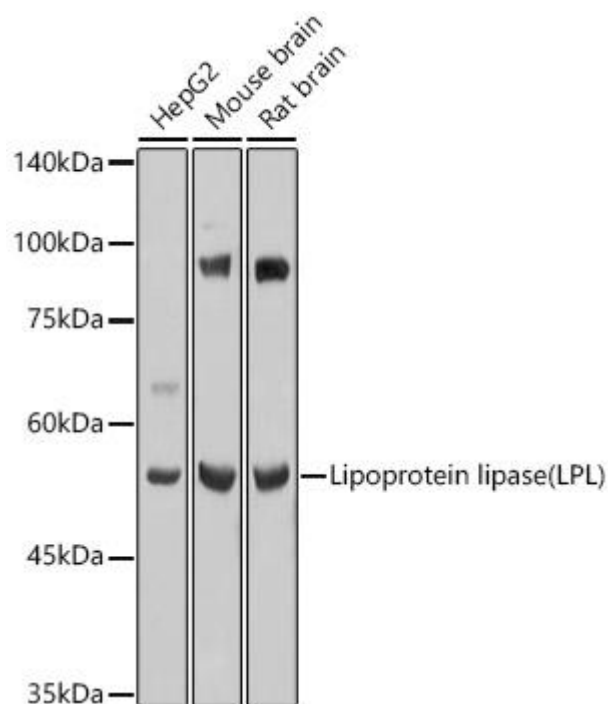
<b>Catalog No</b>	YP-mAb-18540
<b>Isotype</b>	IgG
<b>Reactivity</b>	Human, Mouse, Rat
<b>Applications</b>	WB
<b>Gene Name</b>	
<b>Protein Name</b>	
<b>Immunogen</b>	Recombinant fusion protein containing a sequence corresponding to amino acids 124-475 of human Lipoprotein lipase (Lipoprotein lipase (LPL)) (NP_000228.1)
<b>Specificity</b>	
<b>Formulation</b>	
<b>Source</b>	
<b>Purification</b>	Affinity purification
<b>Dilution</b>	WB 1:500 - 1:1000
<b>Concentration</b>	1 mg/ml
<b>Purity</b>	≥90%
<b>Storage Stability</b>	-20°C/1 year
<b>Synonyms</b>	LIPD; HDLCQ11; Lipoprotein lipase (LPL)
<b>Observed Band</b>	53kDa
<b>Cell Pathway</b>	
<b>Tissue Specificity</b>	
<b>Function</b>	
<b>Background</b>	LPL encodes lipoprotein lipase, which is expressed in heart, muscle, and adipose tissue. LPL functions as a homodimer, and has the dual functions of triglyceride hydrolase and ligand/bridging factor for receptor-mediated lipoprotein uptake. Severe mutations that cause LPL deficiency result in type I hyperlipoproteinemia, while less extreme mutations in LPL are linked to many disorders of lipoprotein metabolism.
<b>matters needing attention</b>	Avoid repeated freezing and thawing!
<b>Usage suggestions</b>	This product can be used in immunological reaction related experiments. For more information, please consult technical personnel.



## Products Images



Western blot analysis of extracts of various cell lines, using Lipoprotein lipase (LPL) antibody (A16252) at 1:5000 dilution. Secondary antibody: HRP Goat Anti-Mouse IgG (H+L) (AS014) at 1:10000 dilution. Lysates/proteins: 25μ g per lane. Blocking buffer: 3% nonfat dry milk in TBST. Detection: ECL Basic Kit (RM00020). Exposure time: 180s.



Western blot analysis of extracts of various cell lines, using Lipoprotein lipase (LPL) antibody (A16252) at 1:1000 dilution.

Secondary antibody: HRP Goat Anti-Mouse IgG (H+L) (AS014) at 1:10000 dilution.

Lysates/proteins: 25μ g per lane.

Blocking buffer: 3% nonfat dry milk in TBST.

Detection: ECL Basic Kit (RM00020).

Exposure time: 1s.