

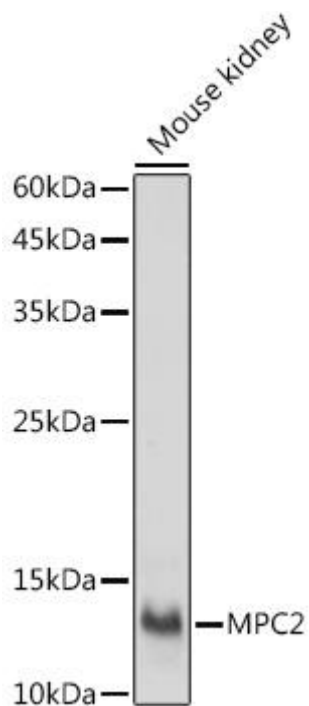


# MPC2 Mouse mAb

Catalog No	YP-mAb-18536
Isotype	IgG
Reactivity	Human, Mouse, Rat
Applications	WB
Gene Name	
Protein Name	
Immunogen	A synthetic peptide corresponding to a sequence within amino acids 1-60 of human MPC2 (NP_056230.1)
Specificity	
Formulation	
Source	
Purification	Affinity purification
Dilution	WB 1:500 - 1:1000
Concentration	1 mg/ml
Purity	≥90%
Storage Stability	-20°C/1 year
Synonyms	BRP44; SLC54A2; MPC2
Observed Band	14kDa
Cell Pathway	
Tissue Specificity	
Function	
Background	Enables identical protein binding activity. Predicted to be involved in mitochondrial pyruvate transmembrane transport. Predicted to act upstream of or within mitochondrial acetyl-CoA biosynthetic process from pyruvate and positive regulation of insulin secretion involved in cellular response to glucose stimulus. Located in mitochondrion
matters needing attention	Avoid repeated freezing and thawing!
Usage suggestions	This product can be used in immunological reaction related experiments. For more information, please consult technical personnel.



## Products Images



Western blot analysis of lysates from Mouse kidney, using MPC2 Mouse pAb (A20196) at 1:1000 dilution. Secondary antibody: HRP Goat Anti-Mouse IgG (H+L) (AS014) at 1:10000 dilution. Lysates/proteins: 25μ g per lane. Blocking buffer: 3% nonfat dry milk in TBST. Detection: ECL Basic Kit (RM00020). Exposure time: 30s