



MLKL Rabbit pAb

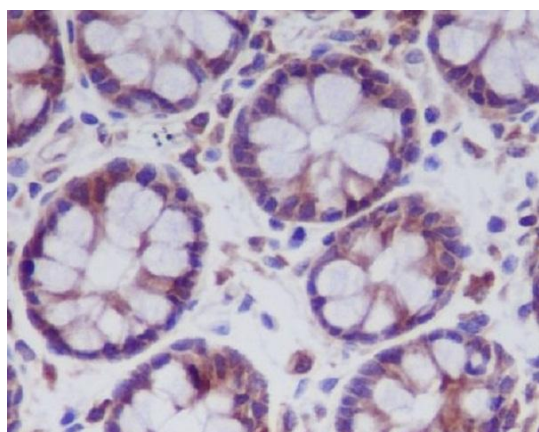
Catalog No	YP-Ab-17897
Isotype	IgG
Reactivity	Human,Mouse
Applications	WB,IHC-P
Gene Name	MLKL
Alternative Names	MLKL
Research Field	Signal Transduction
Product Categories	Primary antibody
Host	Rabbit
Molecular Weight	Calculated MW: 54 kDa; Observed MW: 54 kDa
Clonality	Polyclonal Antibody
Clonality No.	-
Dilution	WB: 1/500-1/1000 IHC: 1/50-1/100
Immunogen	A synthesized peptide derived from human MLKL
Purification	Affinity Chromatography
Conjugation	Unconjugated
Modification	Unmodified
Form	Liquid
Buffer System	Rabbit IgG in phosphate buffered saline , pH 7.4, 150mM NaCl, 0.02% sodium azide and 50% glycerol.
Concentration	1 mg/ml
Purity	≥90%
Storage	Store at 4°C short term. Aliquot and store at -20°C long term. Avoid freeze/thaw cycles.
Background	Pseudokinase that plays a key role in TNF-induced necroptosis, a programmed cell death process. Activated following phosphorylation by RIPK3, leading to homotrimerization, localization to the plasma membrane and execution of programmed necrosis characterized by calcium influx and plasma membrane damage. Does not have protein kinase activity.
matters needing attention	Avoid repeated freezing and thawing!



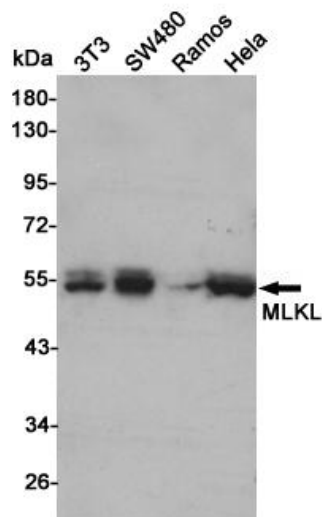
Usage suggestions

This product can be used in immunological reaction related experiments. For more information, please consult technical personnel.

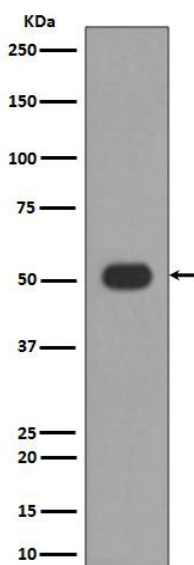
Products Images



Immunohistochemistry analysis of paraffin-embedded Human colon using MLKL antibody. High-pressure and temperature Sodium Citrate pH 6.0 was used for antigen retrieval.



Western blot analysis of MLKL in 3T3, SW480, Ramos and Hela lysates using MLKL antibody.



Western blot analysis of MLKL in HUVEC lysates using MLKL antibody