



GPR143 Monoclonal Antibody

Catalog No	YP-mAb-13302
Isotype	IgG
Reactivity	Human;Rat;Mouse;
Applications	WB
Gene Name	
Protein Name	
Immunogen	Recombinant fusion protein containing a sequence corresponding to amino acids 314-404 of human GPR143 (NP_000264.2)
Specificity	
Formulation	
Source	
Purification	Affinity purification
Dilution	WB 1:1000 - 1:2000
Concentration	1 mg/ml
Purity	≥90%
Storage Stability	-20°C/1 year
Synonyms	OA1; NYS6; GPR143
Observed Band	44kDa
Cell Pathway	
Tissue Specificity	
Function	
Background	<p>This gene encodes a protein that binds to heterotrimeric G proteins and is targeted to melanosomes in pigment cells. This protein is thought to be involved in intracellular signal transduction mechanisms. Mutations in this gene cause ocular albinism type 1, also referred to as Nettle ship-Falls type ocular albinism, a severe visual disorder. A related pseudogene has been identified on chromosome Y.</p>



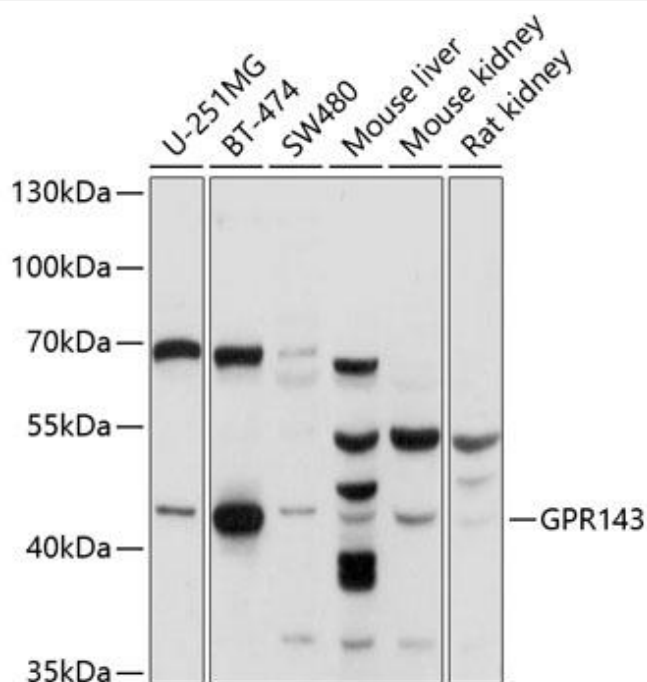
matters needing attention

Avoid repeated freezing and thawing!

Usage suggestions

This product can be used in immunological reaction related experiments. For more information, please consult technical personnel.

Products Images



Western blot analysis of extracts of various cell lines, using GPR143 antibody (A10568) at 1:1000 dilution. Secondary antibody: HRP Goat Anti-Mouse IgG (H+L) (AS014) at 1:10000 dilution. Lysates/proteins: 25μ g per lane. Blocking buffer: 3% nonfat dry milk in TBST. Detection: ECL Basic Kit (RM00020). Exposure time: 15s.