

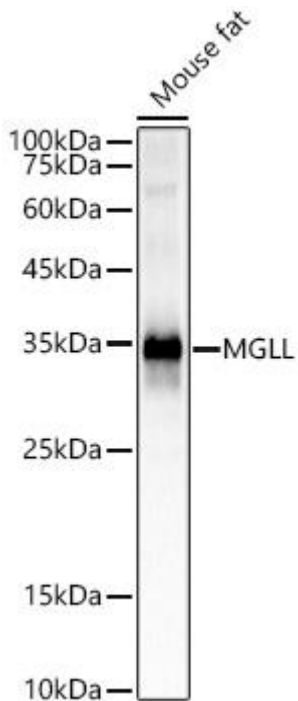


MGLL Mouse mAb

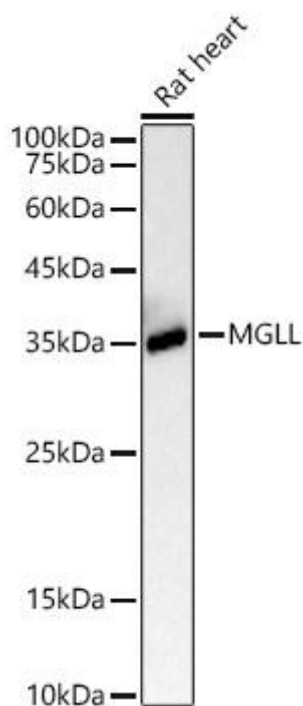
| | |
|----------------------------------|---|
| Catalog No | YP-mAb-18572 |
| Isotype | IgG |
| Reactivity | Human,Mouse,Rat |
| Applications | WB |
| Gene Name | |
| Protein Name | |
| Immunogen | Recombinant fusion protein containing a sequence corresponding to amino acids 1-300 of human MGLL |
| Specificity | |
| Formulation | |
| Source | |
| Purification | Affinity purification |
| Dilution | WB 1:1000 - 1:5000 |
| Concentration | 1 mg/ml |
| Purity | ≥90% |
| Storage Stability | -20°C/1 year |
| Synonyms | MGL; HUK5; MAGL; HU-K5; MGLL |
| Observed Band | 33kDa |
| Cell Pathway | |
| Tissue Specificity | |
| Function | |
| Background | This gene encodes a serine hydrolase of the AB hydrolase superfamily that catalyzes the conversion of monoacylglycerides to free fatty acids and glycerol. The encoded protein plays a critical role in several physiological processes including pain and nociception through hydrolysis of the endocannabinoid 2-arachidonoylglycerol. Expression of this gene may play a role in cancer tumorigenesis and metastasis. Alternatively spliced transcript variants encoding multiple isoforms have been observed for this gene. |
| matters needing attention | Avoid repeated freezing and thawing! |
| Usage suggestions | This product can be used in immunological reaction related experiments. For more information, please consult technical personnel. |



Products Images



Western blot analysis of lysates from mouse fat, using MGLL Mouse mAb (A23082) at 1:2000 dilution. Secondary antibody: HRP Goat Anti-Mouse IgG (H+L) (AS014) at 1:10000 dilution. Lysates/proteins: 25 μ g per lane. Blocking buffer: 3% nonfat dry milk in TBST. Detection: ECL Basic Kit (RM00020). Exposure time: 1s.



Western blot analysis of lysates from rat heart, using MGLL Mouse mAb (A23082) at 1:2000 dilution. Secondary antibody: HRP Goat Anti-Mouse IgG (H+L) (AS014) at 1:10000 dilution. Lysates/proteins: 25 μ g per lane. Blocking buffer: 3% nonfat dry milk in TBST. Detection: ECL Basic Kit (RM00020). Exposure time: 1s