

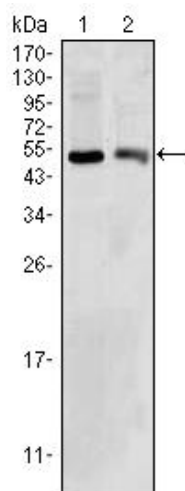


BDH1 Monoclonal Antibody

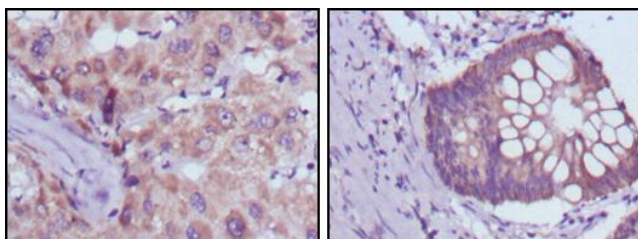
Catalog No	YP-mAb-02322
Isotype	IgG
Reactivity	Human;Mouse;Rat
Applications	WB;IHC;IF;ELISA
Gene Name	BDH1
Protein Name	D-beta-hydroxybutyrate dehydrogenase, mitochondrial
Immunogen	Purified recombinant fragment of human BDH1 expressed in E. Coli.
Specificity	BDH1 Monoclonal Antibody detects endogenous levels of BDH1 protein.
Formulation	Ascitic fluid containing 0.03% sodium azide,0.5% BSA, 50%glycerol.
Source	Monoclonal, Mouse
Purification	Affinity purification
Dilution	WB: 1/500 - 1/2000. IHC: 1/200 - 1/1000. ELISA: 1/10000.. IF 1:50-200
Concentration	1 mg/ml
Purity	≥90%
Storage Stability	-20°C/1 year
Synonyms	BDH1; BDH; D-beta-hydroxybutyrate dehydrogenase; mitochondrial; BDH; 3-hydroxybutyrate dehydrogenase
Observed Band	
Cell Pathway	Mitochondrion inner membrane . Mitochondrion matrix .
Tissue Specificity	Heart,Lung,Ovary,
Function	catalytic activity:(R)-3-hydroxybutanoate + NAD(+) = acetoacetate + NADH.,enzyme regulation:Requires phosphatidylcholine as an allosteric activator for enzymatic activity.,similarity:Belongs to the short-chain dehydrogenases/reductases (SDR) family.,subunit:Homotetramer.,
Background	This gene encodes a member of the short-chain dehydrogenase/reductase gene family. The encoded protein forms a homotetrameric lipid-requiring enzyme of the mitochondrial membrane and has a specific requirement for phosphatidylcholine for optimal enzymatic activity. The encoded protein catalyzes the interconversion of acetoacetate and (R)-3-hydroxybutyrate, the two major ketone bodies produced during fatty acid catabolism. Alternatively spliced transcript variants encoding the same protein have been described. [provided by RefSeq, Jul 2008],
matters needing attention	Avoid repeated freezing and thawing!

**Usage suggestions**

This product can be used in immunological reaction related experiments. For more information, please consult technical personnel.

Products Images

Western Blot analysis using BDH1 Monoclonal Antibody against HepG2 (1) and NIH/3T3 (2) cell lysate.



Immunohistochemistry analysis of paraffin-embedded human liver cancer (left) and colorectal cancer tissues (right) with DAB staining using BDH1 Monoclonal Antibody.