

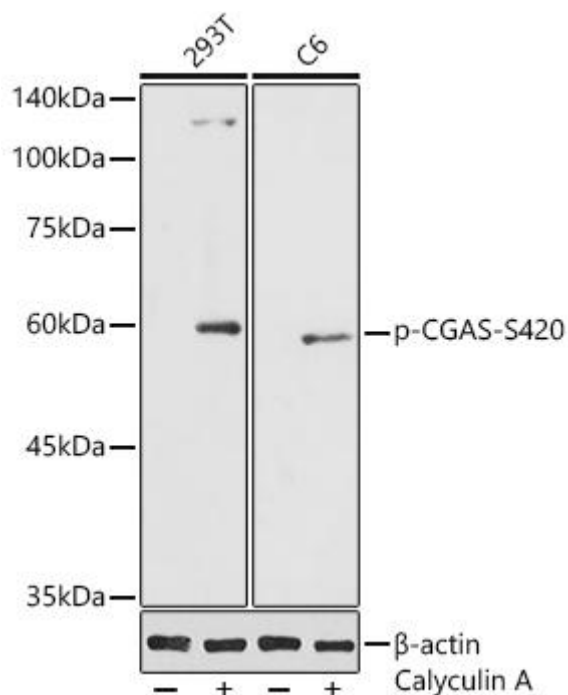


Phospho-CGAS-S420 Mouse mAb

Catalog No	YP-mAb-18552
Isotype	IgG
Reactivity	Human, Mouse, Rat
Applications	WB
Gene Name	DLEU1 LEU1 XTP6
Protein Name	Leukemia-associated protein 1 (Deleted in lymphocytic leukemia 1) (HBV X-transactivated gene 6 protein) (HBV XAg-transactivated protein 6)
Immunogen	A synthetic phosphorylated peptide around S420 of mouse CGAS (NP_775562.2).
Specificity	
Formulation	
Source	
Purification	Affinity purification
Dilution	WB 1:500 - 1:1000
Concentration	1 mg/ml
Purity	≥90%
Storage Stability	-20°C/1 year
Synonyms	Mb21d1; E330016A19Rik; Phospho-CGAS-S420
Observed Band	62kDa
Cell Pathway	
Tissue Specificity	
Function	
Background	The protein encoded by this gene is a DNA binding cytosolic protein that catalyzes the synthesis of cyclic guanosine monophosphate-adenosine monophosphate (cGAMP) after sensing the presence of DNA in the cytoplasm. cGAMP binds another protein, Stimulator of interferon genes (STING), leading to the induction of interferons, and a host immune response. Reduced expression of this gene inhibits interferon induction in the presence of some viral infections. Alternative splicing results in multiple transcript variants
matters needing attention	Avoid repeated freezing and thawing!
Usage suggestions	This product can be used in immunological reaction related experiments. For more information, please consult technical personnel.



Products Images



Western blot analysis of various lysates using Phospho-CGAS-S420 Mouse pAb (AP1228) at 1:1000 dilution. 293T and C6 cells were treated by Calyculin A (100 nM) at 37°C for 30 minutes after serum starvation overnight. Secondary antibody: HRP-conjugated Goat anti-Mouse IgG (H+L) (AS014) at 1:10000 dilution. Lysates/proteins: 25μg per lane. Blocking buffer: 3% nonfat dry milk in TBST. Detection: ECL Basic Kit (RM00020). Exposure time: 90s.