

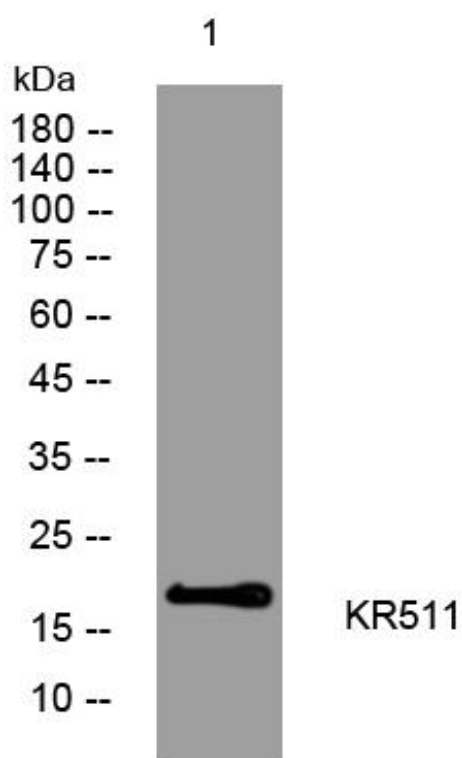


KR511 mouse mAb

Catalog No	YP-mAb-08423
Isotype	IgG
Reactivity	Human;Rat;Mouse;
Applications	WB
Gene Name	KRTAP5-11 KAP5.11 KRTAP5.11
Protein Name	KR511
Immunogen	Synthesized peptide derived from human KR511 AA range: 49-99
Specificity	This antibody detects endogenous levels of KR511 at Human
Formulation	Liquid in PBS containing 50% glycerol, 0.5% BSA and 0.02% sodium azide.
Source	Monoclonal, Mouse,IgG
Purification	The antibody was affinity-purified from mouse antiserum by affinity-chromatography using epitope-specific immunogen.
Dilution	WB 1:500-1:2000
Concentration	1 mg/ml
Purity	≥90%
Storage Stability	-20°C/1 year
Synonyms	
Observed Band	
Cell Pathway	keratin filament,
Tissue Specificity	Restricted to hair root, not detected in any other tissues.
Function	function:In the hair cortex, hair keratin intermediate filaments are embedded in an interfilamentous matrix, consisting of hair keratin-associated protein (KRTAP), which are essential for the formation of a rigid and resistant hair shaft through their extensive disulfide bond cross-linking with abundant cysteine residues of hair keratins. The matrix proteins include the high-sulfur and high-glycine-tyrosine keratins.,similarity:Belongs to the KRTAP type 5 family.,subunit:Interacts with hair keratins.,tissue specificity:Restricted to hair root, not detected in any other tissues.,
Background	
matters needing attention	Avoid repeated freezing and thawing!

**Usage suggestions**

This product can be used in immunological reaction related experiments. For more information, please consult technical personnel.

Products Images

Western Blot analysis of various cells using KR511 mouse mAb