

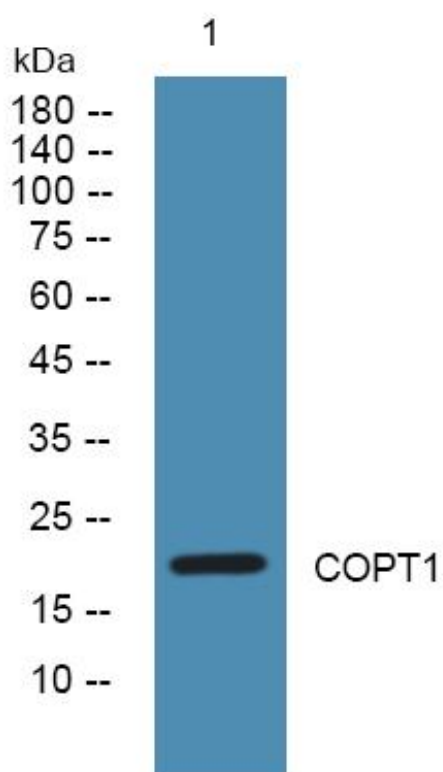


COPT1 Monoclonal Antibody

| | |
|----------------------------------|--|
| Catalog No | YP-mAb-07881 |
| Isotype | IgG |
| Reactivity | Human;Mouse |
| Applications | WB |
| Gene Name | SLC31A1 COPT1 CTR1 |
| Protein Name | High affinity copper uptake protein 1 (Copper transporter 1) (hCTR1) (Solute carrier family 31 member 1) |
| Immunogen | Synthesized peptide derived from part region of human protein |
| Specificity | COPT1 Monoclonal Antibody detects endogenous levels of protein. |
| Formulation | Liquid in PBS containing 50% glycerol, and 0.02% sodium azide. |
| Source | Monoclonal, Mouse,IgG |
| Purification | The antibody was affinity-purified from mouse antiserum by affinity-chromatography using epitope-specific immunogen. |
| Dilution | WB 1:500-1:2000 |
| Concentration | 1 mg/ml |
| Purity | ≥90% |
| Storage Stability | -20°C/1 year |
| Synonyms | |
| Observed Band | 20kD |
| Cell Pathway | Cell membrane; Multi-pass membrane protein. Localizes to the apical membrane in intestinal epithelial cells. . |
| Tissue Specificity | Brain,Liver,Lung,Skeletal muscle,Skin, |
| Function | function:Involved in high-affinity copper uptake.,PTM:O-Glycosylation at Thr-27 protects from proteolytic cleavage in the N-terminal extracellular domain.,similarity:Belongs to the SLC31A transporter family.,subunit:Homotrimer., |
| Background | The protein encoded by this gene is a high-affinity copper transporter found in the cell membrane. The encoded protein functions as a homotrimer to effect the uptake of dietary copper. [provided by RefSeq, Aug 2011], |
| matters needing attention | Avoid repeated freezing and thawing! |
| Usage suggestions | This product can be used in immunological reaction related experiments. For more information, please consult technical personnel. |



Products Images



Western Blot analysis of various cells using COPT1
Monoclonal Antibody