



# WNT6 Monoclonal Antibody

<b>Catalog No</b>	YP-mAb-05160
<b>Isotype</b>	IgG
<b>Reactivity</b>	Human;Mouse
<b>Applications</b>	WB
<b>Gene Name</b>	WNT6
<b>Protein Name</b>	Protein Wnt-6
<b>Immunogen</b>	Synthesized peptide derived from human protein . at AA range: 130-210
<b>Specificity</b>	WNT6 Monoclonal Antibody detects endogenous levels of protein.
<b>Formulation</b>	Liquid in PBS containing 50% glycerol, and 0.02% sodium azide.
<b>Source</b>	Monoclonal, Mouse,IgG
<b>Purification</b>	The antibody was affinity-purified from mouse antiserum by affinity-chromatography using epitope-specific immunogen.
<b>Dilution</b>	WB 1:500-1:2000
<b>Concentration</b>	1 mg/ml
<b>Purity</b>	≥90%
<b>Storage Stability</b>	-20°C/1 year
<b>Synonyms</b>	
<b>Observed Band</b>	40kD
<b>Cell Pathway</b>	Secreted, extracellular space, extracellular matrix.
<b>Tissue Specificity</b>	Expressed in gastric cancer cell lines and gastric cancer tissues (at protein level). Detected in the apical gland region of the gastric foveolar epithelium (at protein level).
<b>Function</b>	function:Ligand for members of the frizzled family of seven transmembrane receptors.,function:Ligand for members of the frizzled family of seven transmembrane receptors. Probable developmental protein. May be a signaling molecule which affects the development of discrete regions of tissues. Is likely to signal over only few cell diameters.,similarity:Belongs to the Wnt family.,subunit:Interacts with PORCN.,
<b>Background</b>	The WNT gene family consists of structurally related genes which encode secreted signaling proteins. These proteins have been implicated in oncogenesis and in several developmental processes, including regulation of cell fate and patterning during embryogenesis. This gene is a member of the WNT gene family. It is overexpressed in cervical cancer cell line and strongly coexpressed with another family member, WNT10A, in colorectal cancer cell line. The gene overexpression may play key roles in carcinogenesis. This gene and the WNT10A gene are clustered in the chromosome 2q35 region. The protein encoded by this



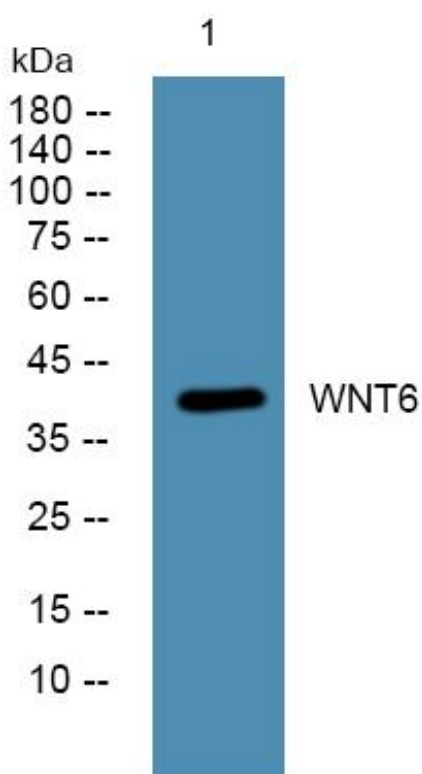
gene is 97% identical to the mouse Wnt6 protein at the amino acid level. [provided by RefSeq, Jul 2008],

**matters needing attention**

Avoid repeated freezing and thawing!

**Usage suggestions**

This product can be used in immunological reaction related experiments. For more information, please consult technical personnel.

**Products Images**

Western Blot analysis of various cells using WNT6 Monoclonal Antibody