



Cleaved-Tumstatin (P1426) Monoclonal Antibody

Catalog No	YP-mAb-16803
Isotype	IgG
Reactivity	Human;Monkey
Applications	WB;ELISA
Gene Name	COL4A3
Protein Name	Collagen alpha-3(IV) chain
Immunogen	The antiserum was produced against synthesized peptide derived from human Collagen IV alpha3. AA range:1407-1456
Specificity	Cleaved-Tumstatin (P1426) Monoclonal Antibody detects endogenous levels of fragment of activated Tumstatin protein resulting from cleavage adjacent to P1426.
Formulation	Liquid in PBS containing 50% glycerol, 0.5% BSA and 0.02% sodium azide.
Source	Monoclonal, mouse,IgG
Purification	The antibody was affinity-purified from mouse antiserum by affinity-chromatography using epitope-specific immunogen.
Dilution	Western Blot: 1/500 - 1/2000. ELISA: 1/40000. Not yet tested in other applications.
Concentration	1 mg/ml
Purity	≥90%
Storage Stability	-20°C/1 year
Synonyms	COL4A3; Collagen alpha-3(IV) chain; Goodpasture antigen
Observed Band	27kD
Cell Pathway	Secreted, extracellular space, extracellular matrix, basement membrane. Colocalizes with COL4A4 and COL4A5 in GBM, tubular basement membrane (TBM) and synaptic basal lamina (BL).
Tissue Specificity	Alpha 3 and alpha 4 type IV collagens are colocalized and present in kidney, eye, basement membranes of lens capsule, cochlea, lung, skeletal muscle, aorta, synaptic fibers, fetal kidney and fetal lung. PubMed:8083201 reports similar levels of expression of alpha 3 and alpha 4 type IV collagens in kidney, but PubMed:7523402 reports that in kidney levels of alpha 3 type IV collagen are significantly lower than those of alpha 4 type IV collagen. According to PubMed:8083201, alpha 3 type IV collagen is not detected in heart, brain, placenta, liver, pancreas, extrasynaptic muscle fibers, endoneurial and perineurial nerves, fetal brain, fetal heart and fetal liver. According to PubMed:7523402, alpha 3 type IV collagen is strongly expressed in pancreas, neuroretina and calvaria and not expressed
Function	alternative products:The majority of isoforms differ in the C-terminal part of the NC1 domain,disease:Autoantibodies against the NC1 domain of alpha 3(IV) are found in Goodpasture syndrome, an autoimmune disease of lung and



kidney.,disease:Defects in COL4A3 are a cause of Alport syndrome autosomal recessive (APSAR) [MIM:203780]. APSAR is characterized by progressive glomerulonephritis, glomerular basement membrane defects, renal failure, sensorineural deafness and specific eye abnormalities (lenticulous and macular flecks). The disorder shows considerable heterogeneity in that families differ in the age of end-stage renal disease and the occurrence of deafness.,disease:Defects in COL4A3 are a cause of benign familial hematuria (BFH) [MIM:141200]; also known as thin basement membrane nephropathy. BFH is characterized by persistent hematuria, an electron microscopically detectable thin glo

Background

Type IV collagen, the major structural component of basement membranes, is a multimeric protein composed of 3 alpha subunits. These subunits are encoded by 6 different genes, alpha 1 through alpha 6, each of which can form a triple helix structure with 2 other subunits to form type IV collagen. This gene encodes alpha 3. In the Goodpasture syndrome, autoantibodies bind to the collagen molecules in the basement membranes of alveoli and glomeruli. The epitopes that elicit these autoantibodies are localized largely to the non-collagenous C-terminal domain of the protein. A specific kinase phosphorylates amino acids in this same C-terminal region and the expression of this kinase is upregulated during pathogenesis. This gene is also linked to an autosomal recessive form of Alport syndrome. The mutations contributing to this syndrome are also located within the exons that encode this C-terminal r

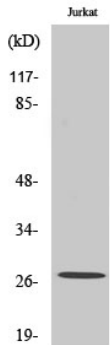
matters needing attention

Avoid repeated freezing and thawing!

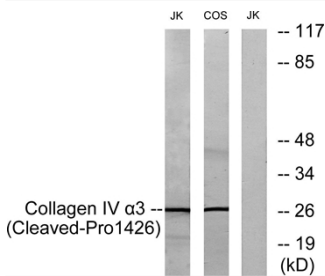
Usage suggestions

This product can be used in immunological reaction related experiments. For more information, please consult technical personnel.

Products Images



Western Blot analysis of various cells using Cleaved-Tumstatin (P1426) Monoclonal Antibody



Western blot analysis of lysates from Jurkat and COS7 cells, treated with etoposide 25uM 24h, using Collagen IV alpha3 (Cleaved-Pro1426) Antibody. The lane on the right is blocked with the synthesized peptide.