



# Cleaved-C1r HC (R463) Monoclonal Antibody

<b>Catalog No</b>	YP-mAb-13773
<b>Isotype</b>	IgG
<b>Reactivity</b>	Human;Rat;Mouse;
<b>Applications</b>	WB;ELISA
<b>Gene Name</b>	C1R
<b>Protein Name</b>	Complement C1r subcomponent
<b>Immunogen</b>	The antiserum was produced against synthesized peptide derived from human C1R. AA range:414-463
<b>Specificity</b>	Cleaved-C1r HC (R463) Monoclonal Antibody detects endogenous levels of fragment of activated C1r HC protein resulting from cleavage adjacent to R463.
<b>Formulation</b>	Liquid in PBS containing 50% glycerol, 0.5% BSA and 0.02% sodium azide.
<b>Source</b>	Monoclonal, mouse,IgG
<b>Purification</b>	The antibody was affinity-purified from mouse antiserum by affinity-chromatography using epitope-specific immunogen.
<b>Dilution</b>	Western Blot: 1/500 - 1/2000. ELISA: 1/10000. Not yet tested in other applications.
<b>Concentration</b>	1 mg/ml
<b>Purity</b>	≥90%
<b>Storage Stability</b>	-20°C/1 year
<b>Synonyms</b>	C1R; Complement C1r subcomponent; Complement component 1 subcomponent r
<b>Observed Band</b>	51kD
<b>Cell Pathway</b>	Secreted .
<b>Tissue Specificity</b>	Adipose tissue,Colon endothelium,Liver,Plasma,Skin,
<b>Function</b>	catalytic activity:Selective cleavage of Lys(or Arg)- -Ile bond in complement subcomponent C1s to form the active form of C1s (EC 3.4.21.42).,function:C1r B chain is a serine protease that combines with C1q and C1s to form C1, the first component of the classical pathway of the complement system.,polymorphism:Complement component C1r deficiency [MIM:216950] leads to the failure of the classical complement system activation pathway (C1 deficiency). Individuals with C1 deficiency are highly susceptible to infections by microorganisms and have greater risk in developing autoimmune diseases such as systemic lupus erythematosus (SLE).,PTM:The iron and 2-oxoglutarate dependent 3-hydroxylation of aspartate and asparagine is (R) stereospecific within EGF domains.,similarity:Belongs to the peptidase S1 family.,similarity:Contains 1 EGF-like domain.,similarity:Contains 1 peptidase S1 domain.,simil



## Background

catalytic activity: Selective cleavage of Lys(or Arg)-|-Ile bond in complement subcomponent C1s to form the active form of C1s (EC 3.4.21.42).,function: C1r B chain is a serine protease that combines with C1q and C1s to form C1, the first component of the classical pathway of the complement system.,polymorphism: Complement component C1r deficiency [MIM:216950] leads to the failure of the classical complement system activation pathway (C1 deficiency). Individuals with C1 deficiency are highly susceptible to infections by microorganisms and have greater risk in developing autoimmune diseases such as systemic lupus erythematosus (SLE).,PTM: The iron and 2-oxoglutarate dependent 3-hydroxylation of aspartate and asparagine is (R) stereospecific within EGF domains.,similarity: Belongs to the peptidase S1 family.,similarity: Contains 1 EGF-like domain.,similarity: Contains 1 peptidase S1 domain.,similarity: Contains 2 CUB domains.,similarity: Contains 2 Sushi (CCP/SCR) domains.,subunit: C1 is a calcium-dependent trimolecular complex of C1q, C1r and C1s in the molar ration of 1:2:2. C1r is a dimer of identical chains, each of which is activated by cleavage into two chains, A and B, connected by disulfide bonds.,

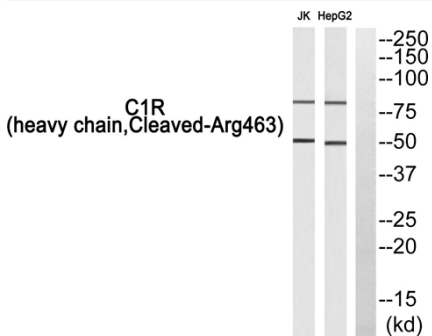
## matters needing attention

Avoid repeated freezing and thawing!

## Usage suggestions

This product can be used in immunological reaction related experiments. For more information, please consult technical personnel.

## Products Images



Western blot analysis of C1R (heavy chain, Cleaved-Arg463) Antibody. The lane on the right is blocked with the C1R (heavy chain, Cleaved-Arg463) peptide.