



# Olfactory receptor 8D1 Monoclonal Antibody

<b>Catalog No</b>	YP-mAb-13630
<b>Isotype</b>	IgG
<b>Reactivity</b>	Human;Rat;Mouse;
<b>Applications</b>	WB;IF;ELISA
<b>Gene Name</b>	OR8D1
<b>Protein Name</b>	Olfactory receptor 8D1
<b>Immunogen</b>	The antiserum was produced against synthesized peptide derived from human OR8D1. AA range:234-283
<b>Specificity</b>	Olfactory receptor 8D1 Monoclonal Antibody detects endogenous levels of Olfactory receptor 8D1 protein.
<b>Formulation</b>	Liquid in PBS containing 50% glycerol, 0.5% BSA and 0.02% sodium azide.
<b>Source</b>	Monoclonal, mouse,IgG
<b>Purification</b>	The antibody was affinity-purified from mouse antiserum by affinity-chromatography using epitope-specific immunogen.
<b>Dilution</b>	Western Blot: 1/500 - 1/2000. Immunofluorescence: 1/200 - 1/1000. ELISA: 1/20000. Not yet tested in other applications.
<b>Concentration</b>	1 mg/ml
<b>Purity</b>	≥90%
<b>Storage Stability</b>	-20°C/1 year
<b>Synonyms</b>	OR8D1; OR8D3; Olfactory receptor 8D1; OST004; Olfactory receptor 8D3; Olfactory receptor OR11-301; Olfactory receptor-like protein JCG9
<b>Observed Band</b>	34kD
<b>Cell Pathway</b>	Cell membrane; Multi-pass membrane protein.
<b>Tissue Specificity</b>	Expressed in the tongue.
<b>Function</b>	function:Odorant receptor (Potential). May be involved in taste perception.,similarity:Belongs to the G-protein coupled receptor 1 family.,tissue specificity:Expressed in the tongue.,
<b>Background</b>	olfactory receptor family 8 subfamily D member 1(OR8D1) Homo sapiens Olfactory receptors interact with odorant molecules in the nose, to initiate a neuronal response that triggers the perception of a smell. The olfactory receptor proteins are members of a large family of G-protein-coupled receptors (GPCR) arising from single coding-exon genes. Olfactory receptors share a 7-transmembrane domain structure with many neurotransmitter and hormone receptors and are responsible for the recognition and G protein-mediated transduction of odorant signals. The olfactory receptor gene family is the largest in the genome. The nomenclature assigned to the olfactory receptor genes and proteins for this organism is independent of other organisms. [provided by



RefSeq, Jul 2008],

---

**matters needing attention**

Avoid repeated freezing and thawing!

---

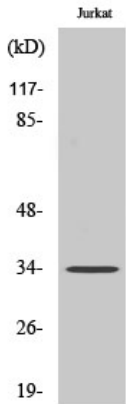
**Usage suggestions**

This product can be used in immunological reaction related experiments. For more information, please consult technical personnel.

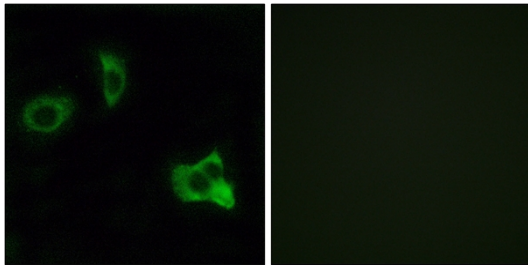
---



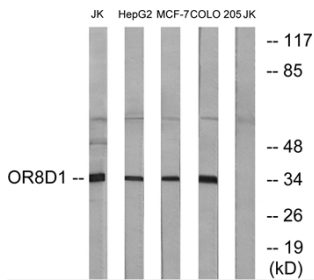
## Products Images



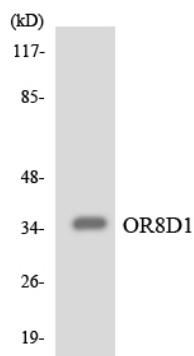
Western Blot analysis of various cells using Olfactory receptor 8D1 Monoclonal Antibody



Immunofluorescence analysis of MCF7 cells, using OR8D1 Antibody. The picture on the right is blocked with the synthesized peptide.



Western blot analysis of lysates from Jurkat, HepG2, MCF-7, and COLO cells, using OR8D1 Antibody. The lane on the right is blocked with the synthesized peptide.



Western blot analysis of the lysates from HUVEC cells using OR8D1 antibody.