

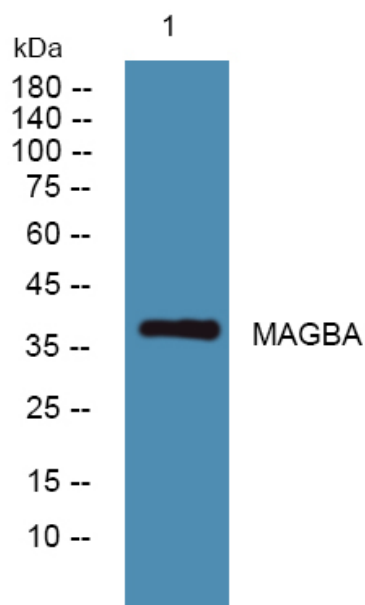


MAGBA Monoclonal Antibody

| | |
|----------------------------------|--|
| Catalog No | YP-mAb-06475 |
| Isotype | IgG |
| Reactivity | Human;Rat;Mouse; |
| Applications | WB;ELISA |
| Gene Name | MAGEB10 |
| Protein Name | Melanoma-associated antigen B10 (MAGE-B10 antigen) |
| Immunogen | Synthesized peptide derived from human protein . at AA range: 40-120 |
| Specificity | MAGBA Monoclonal Antibody detects endogenous levels of protein. |
| Formulation | Liquid in PBS containing 50% glycerol, and 0.02% sodium azide. |
| Source | Monoclonal, mouse,IgG |
| Purification | The antibody was affinity-purified from mouse antiserum by affinity-chromatography using epitope-specific immunogen. |
| Dilution | WB 1:500-2000 ELISA 1:5000-20000 |
| Concentration | 1 mg/ml |
| Purity | ≥90% |
| Storage Stability | -20°C/1 year |
| Synonyms | |
| Observed Band | 38kD |
| Cell Pathway | |
| Tissue Specificity | Blood,Testis, |
| Function | similarity:Contains 1 MAGE domain., |
| Background | MAGE family member B10(MAGEB10) Homo sapiens This gene encodes a member of the B subfamily of the melanoma associated antigen protein family. The encoded protein is specifically expressed in testis and tumor cells. [provided by RefSeq, Apr 2010], |
| matters needing attention | Avoid repeated freezing and thawing! |
| Usage suggestions | This product can be used in immunological reaction related experiments. For more information, please consult technical personnel. |



Products Images



Western blot analysis of lysates from K562 cells,
primary antibody was diluted at 1:1000, 4°over night