



# PEX5R rabbit pAb

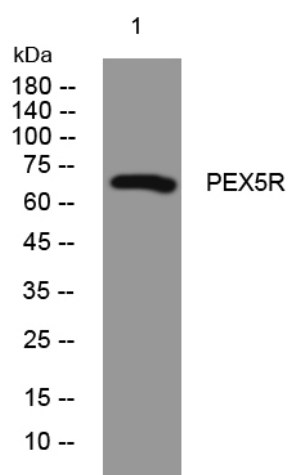
|                                  |   |
|----------------------------------|---|
| <b>Catalog No</b>                | YP-Ab-12268   |
| <b>Isotype</b>                   | IgG   |
| <b>Reactivity</b>                | Human; Mouse; Rat   |
| <b>Applications</b>              | WB; IHC   |
| <b>Gene Name</b>                 | PEX5L PEX5R PXR2  |
| <b>Protein Name</b>              | PEX5R   |
| <b>Immunogen</b>                 | Synthesized peptide derived from human PEX5R AA range: 267-317  |
| <b>Specificity</b>               | This antibody detects endogenous levels of PEX5R at Human/Mouse/Rat   |
| <b>Formulation</b>               | Liquid in PBS containing 50% glycerol, 0.5% BSA and 0.02% sodium azide.   |
| <b>Source</b>                    | Polyclonal, Rabbit, IgG   |
| <b>Purification</b>              | The antibody was affinity-purified from rabbit serum by affinity-chromatography using specific immunogen.   |
| <b>Dilution</b>                  | WB 1:500-2000; IHC-p 1:50-300   |
| <b>Concentration</b>             | 1 mg/ml   |
| <b>Purity</b>                    | ≥90%  |
| <b>Storage Stability</b>         | -20°C/1 year  |
| <b>Synonyms</b>                  |   |
| <b>Observed Band</b>             |   |
| <b>Cell Pathway</b>              | Cytoplasm . Membrane ; Peripheral membrane protein . Some fraction is membrane associated via its interaction with RAB8B. .   |
| <b>Tissue Specificity</b>        | Mainly expressed in brain. Also expressed in pancreas, testis and pituitary.  |
| <b>Function</b>                  | similarity: Belongs to the peroxisomal targeting signal receptor family., similarity: Contains 5 TPR repeats., subcellular location: Some fraction is membrane associated via its interaction with RAB8B., subunit: Interacts with RAB8B (By similarity). May interact with the C-terminal PTS1-type tripeptide peroxisomal targeting signal (SKL-type); the relevance of such interaction is however unclear., tissue specificity: Mainly expressed in brain. Also expressed in pancreas, testis and pituitary., |
| <b>Background</b>                |   |
| <b>matters needing attention</b> | Avoid repeated freezing and thawing!  |



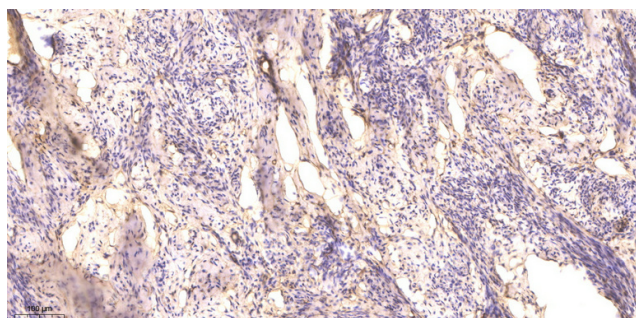
## Usage suggestions

This product can be used in immunological reaction related experiments. For more information, please consult technical personnel.

## Products Images



Western blot analysis of lysates from HeLa cells, primary antibody was diluted at 1:1000, 4° over night



Immunohistochemical analysis of paraffin-embedded human cervical carcinoma. 1, Antibody was diluted at 1:200(4° overnight). 2, Tris-EDTA, pH9.0 was used for antigen retrieval. 3, Secondary antibody was diluted at 1:200(room temperature, 45min).