

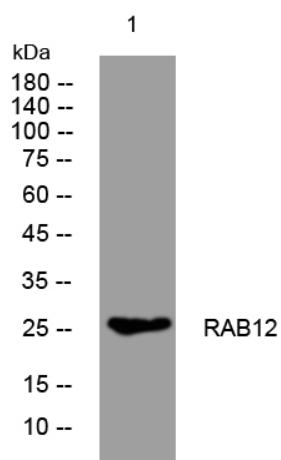


RAB12 rabbit pAb

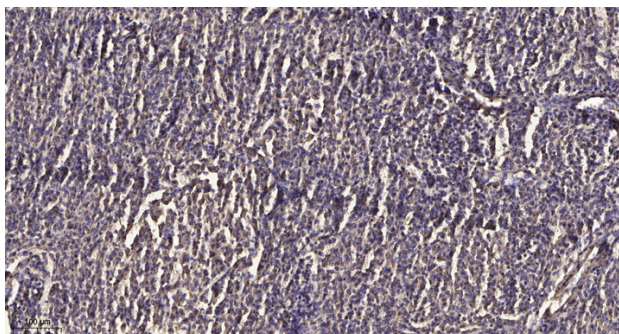
Catalog No	YP-Ab-12260
Isotype	IgG
Reactivity	Human; Mouse; Rat
Applications	WB; ELISA; IHC
Gene Name	RAB12
Protein Name	RAB12
Immunogen	Synthesized peptide derived from human RAB12 AA range: 186-236
Specificity	This antibody detects endogenous levels of RAB12 at Human/Mouse/Rat
Formulation	Liquid in PBS containing 50% glycerol, 0.5% BSA and 0.02% sodium azide.
Source	Polyclonal, Rabbit, IgG
Purification	The antibody was affinity-purified from rabbit serum by affinity-chromatography using specific immunogen.
Dilution	WB 1:500-2000; IHC-p 1:50-300; ELISA 2000-20000
Concentration	1 mg/ml
Purity	≥90%
Storage Stability	-20°C/1 year
Synonyms	
Observed Band	
Cell Pathway	Recycling endosome membrane ; Lipid-anchor ; Cytoplasmic side . Lysosome membrane ; Lipid-anchor ; Cytoplasmic side . Golgi apparatus membrane . Cytoplasmic vesicle, autophagosome .
Tissue Specificity	
Function	caution: Could be the product of a pseudogene., sequence caution: Intron retention., similarity: Belongs to the small GTPase superfamily. Rab family.,
Background	
matters needing attention	Avoid repeated freezing and thawing!
Usage suggestions	This product can be used in immunological reaction related experiments. For more information, please consult technical personnel.



Products Images



Western blot analysis of lysates from MDA-MB cells, primary antibody was diluted at 1:1000, 4° over night



Immunohistochemical analysis of paraffin-embedded human meningioma. 1, Antibody was diluted at 1:200(4° overnight). 2, Tris-EDTA, pH9.0 was used for antigen retrieval. 3, Secondary antibody was diluted at 1:200(room temperature, 45min).