



CXXC4 rabbit pAb

Catalog No	YP-Ab-12257
Isotype	IgG
Reactivity	Human; Mouse; Rat
Applications	WB
Gene Name	CXXC4 IDAX
Protein Name	CXXC4
Immunogen	Synthesized peptide derived from human CXXC4 AA range: 15-65
Specificity	This antibody detects endogenous levels of CXXC4 at Human/Mouse/Rat
Formulation	Liquid in PBS containing 50% glycerol, 0.5% BSA and 0.02% sodium azide.
Source	Polyclonal, Rabbit, IgG
Purification	The antibody was affinity-purified from rabbit serum by affinity-chromatography using specific immunogen.
Dilution	WB 1: 500-2000
Concentration	1 mg/ml
Purity	≥90%
Storage Stability	-20°C/1 year
Synonyms	
Observed Band	
Cell Pathway	Cytoplasm .
Tissue Specificity	
Function	function: Acts as a negative regulator of the Wnt signaling pathway via its interaction with DVL1., similarity: Contains 1 CXXC-type zinc finger., subunit: Interacts with the PDZ domain of DVL1.,
Background	This gene encodes a CXXC-type zinc finger domain-containing protein that functions as an antagonist of the canonical wingless/integrated signaling pathway. The encoded protein negatively regulates wingless/integrated signaling through interaction with the post synaptic density protein/ Drosophila disc large tumor suppressor/ zonula occludens-1 protein domain of Dishevelled, a scaffolding protein required for the stabilization of the transcriptional co-activator beta-catenin. In addition, the CXXC domain of this protein has been shown to bind unmethylated CpG dinucleotides, localize to promoters and CpG islands, and interact with the catalytic domain of methylcytosine dioxygenase ten-eleven-translocation 2, an iron and alpha-ketoglutarate-dependent dioxygenase that modifies the methylation status of DNA. In humans, a mutation in this gene has been associated with development of malignant renal cell



carcinoma. Alternative splicing results in multiple transcript variants. [provided by RefSeq, Sep 2015],

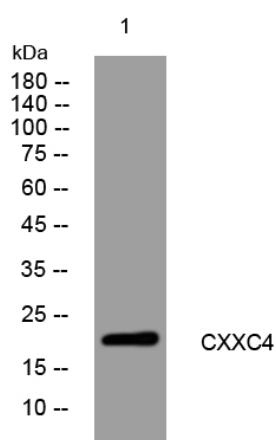
matters needing attention

Avoid repeated freezing and thawing!

Usage suggestions

This product can be used in immunological reaction related experiments. For more information, please consult technical personnel.

Products Images



Western blot analysis of lysates from HEK293 cells, primary antibody was diluted at 1:1000, 4° over night