



ZFP57 rabbit pAb

Catalog No	YP-Ab-12252
Isotype	IgG
Reactivity	Human; Mouse; Rat
Applications	WB
Gene Name	ZFP57 C6orf40 ZNF698
Protein Name	ZFP57
Immunogen	Synthesized peptide derived from human ZFP57 AA range: 373-423
Specificity	This antibody detects endogenous levels of ZFP57 at Human/Mouse/Rat
Formulation	Liquid in PBS containing 50% glycerol, 0.5% BSA and 0.02% sodium azide.
Source	Polyclonal, Rabbit, IgG
Purification	The antibody was affinity-purified from rabbit serum by affinity-chromatography using specific immunogen.
Dilution	WB 1: 500-2000
Concentration	1 mg/ml
Purity	≥90%
Storage Stability	-20°C/1 year
Synonyms	
Observed Band	
Cell Pathway	Nucleus . Binds various differentially methylated regions (DMR). .
Tissue Specificity	
Function	disease: Defects in ZFP57 are the cause of transient neonatal diabetes mellitus type 1 (TNDM1) [MIM:601410]. Neonatal diabetes is a form of diabetes mellitus defined by the onset of mild-to-severe hyperglycemia within the first months of life. In about half of the neonates, diabetes is transient and resolves at a median age of 3 months, whereas the rest have a permanent form of diabetes. The major cause of TNDM1 is aberrant expression of imprinted genes at chromosome 6q24, associated in 20% of cases with DNA hypomethylation at the transient neonatal diabetes differentially methylated region (DMR), which lies within the imprinted promoter of the PLAGL1 gene. Over 50% of individuals with transient neonatal diabetes and hypomethylation at 6q24 also show mosaic DNA hypomethylation at other imprinted loci throughout the genome and a range of additional clinical features. . domain: The KRAB domain
Background	The protein encoded by this gene is a zinc finger protein containing a KRAB domain. Studies in mouse suggest that this protein may function as a transcriptional repressor. Mutations in this gene have been associated with



transient neonatal diabetes mellitus type 1 (TNDM1).[provided by RefSeq, Sep 2009],

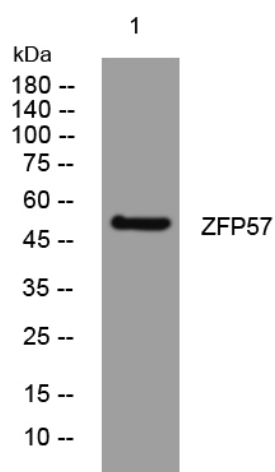
matters needing attention

Avoid repeated freezing and thawing!

Usage suggestions

This product can be used in immunological reaction related experiments. For more information, please consult technical personnel.

Products Images



Western blot analysis of lysates from U2OS cells,
primary antibody was diluted at 1:1000, 4° over night