



TEKT2 rabbit pAb

Catalog No	YP-Ab-12245
Isotype	IgG
Reactivity	Human; Mouse; Rat
Applications	WB
Gene Name	TEKT2
Protein Name	TEKT2
Immunogen	Synthesized peptide derived from human TEKT2 AA range: 224-274
Specificity	This antibody detects endogenous levels of TEKT2 at Human/Mouse/Rat
Formulation	Liquid in PBS containing 50% glycerol, 0.5% BSA and 0.02% sodium azide.
Source	Polyclonal, Rabbit, IgG
Purification	The antibody was affinity-purified from rabbit serum by affinity-chromatography using specific immunogen.
Dilution	WB 1: 500-2000
Concentration	1 mg/ml
Purity	≥90%
Storage Stability	-20°C/1 year
Synonyms	
Observed Band	
Cell Pathway	Cytoplasm, cytoskeleton, cilium axoneme . Cytoplasm, cytoskeleton, flagellum axoneme . Cytoplasm, cytoskeleton, microtubule organizing center . Colocalized with CCDC172 at the perinuclear region. .
Tissue Specificity	Expressed at high levels in testis, trachea and fetal lung, and at lower levels in ovary, pituitary, adult lung, fetal brain and fetal kidney.
Function	function: Structural component of ciliary and flagellar microtubules. Plays a key role in the assembly or attachment of the inner dynein arm to microtubules in sperm flagella and tracheal cilia. Forms filamentous polymers in the walls of ciliary and flagellar microtubules., similarity: Belongs to the tektin family., subcellular location: In sperm, observed in a discontinuous punctate pattern in the flagellum and in the postacrosomal head region., tissue specificity: Expressed at high levels in testis, trachea and fetal lung, and at lower levels in ovary, pituitary, adult lung, fetal brain and fetal kidney.,
Background	This gene product belongs to the tektin family of proteins. Tektins comprise a family of filament-forming proteins that are coassembled with tubulins to form ciliary and flagellar microtubules. This gene is expressed in the testis and its protein is localized to the flagella of the sperms, indicating that it may play a role in spermatogenesis. [provided by RefSeq, Jul 2008],

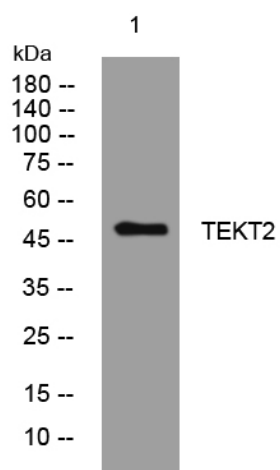
matters needing attention

Avoid repeated freezing and thawing!

Usage suggestions

This product can be used in immunological reaction related experiments. For more information, please consult technical personnel.

Products Images



Western blot analysis of lysates from HeLa cells, primary antibody was diluted at 1:1000, 4° over night