



# DOC2B rabbit pAb

<b>Catalog No</b>	YP-Ab-12236
<b>Isotype</b>	IgG
<b>Reactivity</b>	Human; Mouse; Rat
<b>Applications</b>	WB
<b>Gene Name</b>	DOC2B DOC2BL
<b>Protein Name</b>	DOC2B
<b>Immunogen</b>	Synthesized peptide derived from human DOC2B AA range: 332-382
<b>Specificity</b>	This antibody detects endogenous levels of DOC2B at Human/Mouse/Rat
<b>Formulation</b>	Liquid in PBS containing 50% glycerol, 0.5% BSA and 0.02% sodium azide.
<b>Source</b>	Polyclonal, Rabbit, IgG
<b>Purification</b>	The antibody was affinity-purified from rabbit serum by affinity-chromatography using specific immunogen.
<b>Dilution</b>	WB 1: 500-2000
<b>Concentration</b>	1 mg/ml
<b>Purity</b>	≥90%
<b>Storage Stability</b>	-20°C/1 year
<b>Synonyms</b>	
<b>Observed Band</b>	
<b>Cell Pathway</b>	Cytoplasm. Cytoplasmic granule . Cell membrane ; Peripheral membrane protein . Translocates to the plasma membrane in a calcium-dependent manner. .
<b>Tissue Specificity</b>	Widely expressed with highest levels in brain and kidney. Expressed in pancreatic islet cells (at protein level).
<b>Function</b>	domain: C2 domain 1 is involved in binding calcium and phospholipids., function: May be involved in constitutive membrane trafficking including dynein-dependent intracellular vesicle transport. In vitro, binds calcium and phospholipids., similarity: Contains 2 C2 domains., subunit: Interacts with cytoplasmic dynein light chain TCTEL1/TCTEX1., tissue specificity: Widely expressed with highest levels in brain and kidney.,
<b>Background</b>	There are at least two protein isoforms of the Double C2 protein, namely alpha (DOC2A) and beta (DOC2B), which contain two C2-like domains. DOC2A and DOC2B are encoded by different genes; these genes are at times confused with the unrelated DAB2 gene which was initially named DOC-2. DOC2B is expressed ubiquitously and is suggested to be involved in Ca(2+)-dependent intracellular vesicle trafficking in various types of cells. [provided by RefSeq, Jul 2008],

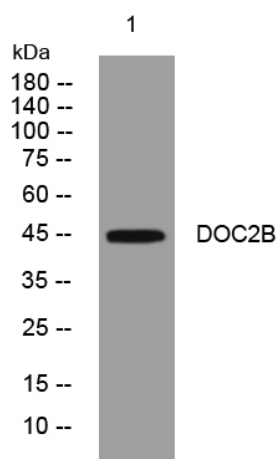
**matters needing attention**

Avoid repeated freezing and thawing!

**Usage suggestions**

This product can be used in immunological reaction related experiments. For more information, please consult technical personnel.

## Products Images



Western blot analysis of lysates from VEC cells,  
primary antibody was diluted at 1:1000, 4° over night