



SYNJ2 rabbit pAb

| | |
|---------------------------|--|
| Catalog No | YP-Ab-12227 |
| Isotype | IgG |
| Reactivity | Human; Mouse; Rat |
| Applications | WB |
| Gene Name | SYNJ2 KIAA0348 |
| Protein Name | SYNJ2 |
| Immunogen | Synthesized peptide derived from human SYNJ2 AA range: 145-195 |
| Specificity | This antibody detects endogenous levels of SYNJ2 at Human/Mouse/Rat |
| Formulation | Liquid in PBS containing 50% glycerol, 0.5% BSA and 0.02% sodium azide. |
| Source | Polyclonal, Rabbit, IgG |
| Purification | The antibody was affinity-purified from rabbit serum by affinity-chromatography using specific immunogen. |
| Dilution | WB 1: 500-2000 |
| Concentration | 1 mg/ml |
| Purity | ≥90% |
| Storage Stability | -20°C/1 year |
| Synonyms | |
| Observed Band | |
| Cell Pathway | Cytoplasm . Cell membrane . Membrane raft . Cell junction, synapse, presynapse . Cytoplasm, cytoskeleton . Localizes at presynapse terminals in brain and at bundles of microtubules surrounding the nucleus in the elongating spermatids corresponding to the manchette (By similarity). Translocates from the cytoplasm to membrane ruffles in a RAC1-dependent manner (PubMed:11084340). |
| Tissue Specificity | |
| Function | alternative products: Additional isoforms seem to exist, catalytic activity: 1-phosphatidyl-1D-myo-inositol 4,5-bisphosphate + H ₂ O = 1-phosphatidyl-1D-myo-inositol 4-phosphate + phosphate., domain: The C-terminal proline-rich region of isoform 2B2 mediates binding to a variety of SH3 domain-containing proteins including SH3GL1, SH3GL2, SH3GL3 and GRB2., function: Inositol 5-phosphatase which may be involved in distinct membrane trafficking and signal transduction pathways. May mediate the inhibitory effect of Rac1 on endocytosis., similarity: Belongs to the synaptojanin family., similarity: Contains 1 RRM (RNA recognition motif) domain., similarity: Contains 1 SAC domain., similarity: In the central section; belongs to the inositol-1,4,5-trisphosphate 5-phosphatase family., subcellular location: Predominantly associated with the particulate fractions., subunit: Binds to GRB2. Isoform 2A binds to SYNJ2BP/ |



Background

The gene is a member of the inositol-polyphosphate 5-phosphatase family. The encoded protein interacts with the ras-related C3 botulinum toxin substrate 1, which causes translocation of the encoded protein to the plasma membrane where it inhibits clathrin-mediated endocytosis. Alternative splicing results in multiple transcript variants. [provided by RefSeq, May 2010],

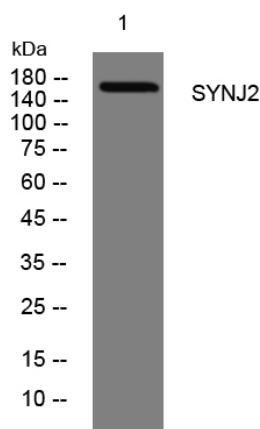
matters needing attention

Avoid repeated freezing and thawing!

Usage suggestions

This product can be used in immunological reaction related experiments. For more information, please consult technical personnel.

Products Images



Western blot analysis of lysates from 293T cells, primary antibody was diluted at 1:1000, 4° over night