



# SGCG rabbit pAb

<b>Catalog No</b>	YP-Ab-12224
<b>Isotype</b>	IgG
<b>Reactivity</b>	Human; Mouse
<b>Applications</b>	WB;IHC
<b>Gene Name</b>	SGCG
<b>Protein Name</b>	SGCG
<b>Immunogen</b>	Synthesized peptide derived from human SGCG AA range: 213-263
<b>Specificity</b>	This antibody detects endogenous levels of SGCG at Human/Mouse
<b>Formulation</b>	Liquid in PBS containing 50% glycerol, 0.5% BSA and 0.02% sodium azide.
<b>Source</b>	Polyclonal, Rabbit,IgG
<b>Purification</b>	The antibody was affinity-purified from rabbit serum by affinity-chromatography using specific immunogen.
<b>Dilution</b>	WB 1:500-2000;IHC-p 1:50-300
<b>Concentration</b>	1 mg/ml
<b>Purity</b>	≥90%
<b>Storage Stability</b>	-20°C/1 year
<b>Synonyms</b>	
<b>Observed Band</b>	
<b>Cell Pathway</b>	Cell membrane, sarcolemma ; Single-pass type II membrane protein . Cytoplasm, cytoskeleton .
<b>Tissue Specificity</b>	Expressed in skeletal and heart muscle.
<b>Function</b>	disease:Defects in SGCG are the cause of limb-girdle muscular dystrophy type 2C (LGMD2C) [MIM:253700]. LGMD2C is characterized by progressive muscle wasting from early childhood.,function:Component of the sarcoglycan complex, a subcomplex of the dystrophin-glycoprotein complex which forms a link between the F-actin cytoskeleton and the extracellular matrix.,online information:SGCG mutations in LGMD2C,similarity:Belongs to the sarcoglycan beta/delta/gamma/zeta family.,subunit:Interacts with the syntrophin SNTA1. Cross-link to form 2 major subcomplexes: one consisting of SGCB, SGCD and SGCG and the other consisting of SGCB and SGCD. The association between SGCB and SGCG is particularly strong while SGCA is loosely associated with the other sarcoglycans (By similarity). Interacts with FLNC.,tissue specificity:Expressed in skeletal and heart muscle.,
<b>Background</b>	This gene encodes gamma-sarcoglycan, one of several sarcolemmal transmembrane glycoproteins that interact with dystrophin. The dystrophin-glycoprotein complex (DGC) spans the sarcolemma and is comprised



of dystrophin, syntrophin, alpha- and beta-dystroglycans and sarcoglycans. The DGC provides a structural link between the subsarcolemmal cytoskeleton and the extracellular matrix of muscle cells. Defects in the encoded protein can lead to early onset autosomal recessive muscular dystrophy, in particular limb-girdle muscular dystrophy, type 2C (LGMD2C). [provided by RefSeq, Oct 2008],

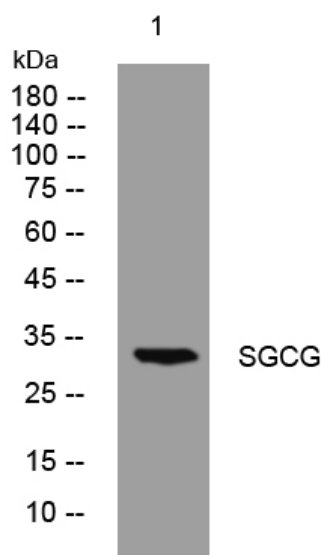
**matters needing attention**

Avoid repeated freezing and thawing!

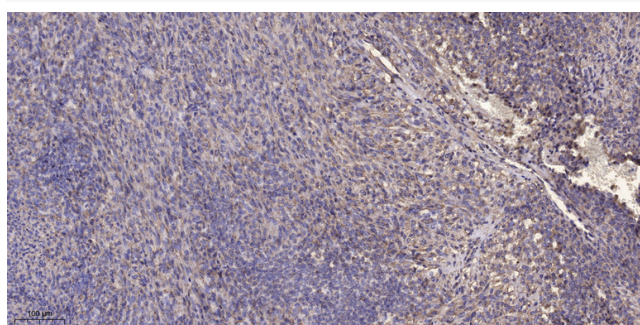
**Usage suggestions**

This product can be used in immunological reaction related experiments. For more information, please consult technical personnel.

## Products Images



Western blot analysis of lysates from K562 cells, primary antibody was diluted at 1:1000, 4° over night



Immunohistochemical analysis of paraffin-embedded human Colon cancer. 1, Antibody was diluted at 1:200(4° overnight). 2, Tris-EDTA, pH9.0 was used for antigen retrieval. 3, Secondary antibody was diluted at 1:200(room temperature, 45min).